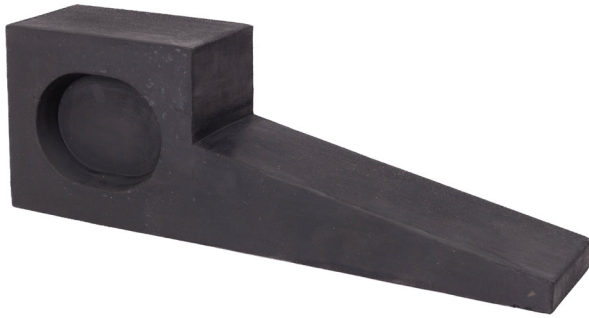




# EN16005 TEST DEVICES

# TEST DEVICES

RGL now offer a wide range of EN16005 test devices, including CA-TEST-BOX, CB-TEST-BODY, & ESPE Hinge Tester.



**CB-TEST-BODY**



**ESPE-HT-1**

## SPECIFICATION

### CB-TEST-BODY

- Revolving door test body that meets ADSA requirements of BS EN 16005
- 1 piece matt black rubber material

### ESPE-HT-1

- ESPE Hinge (Pivot area Hazardous Zone)
- This test is to check the connection, detection zone and continued operation of the safety system for this area.
- Testing on Electro Sensitive Protective Material (ESPE)
- Length 275mm
- Designed to meet EN16005 standard

## FEATURES

### CB-TEST-BODY (SPECIFICATIONS)

Fig 1

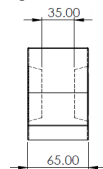
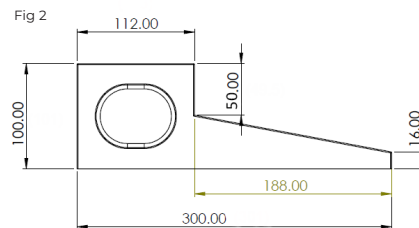
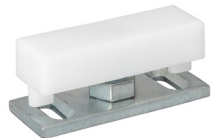


Fig 2



## OTHER PRODUCTS

**BFG01**



**EXT/AP/KS-1**



**RFG02**



**AS900**



## DIMENSIONS

### CB-TEST-BODY

- 275mm Length (mm)

## CONTENTS

- CB-TEST-BODY
- ESPE-HT-1
- 275mm Length (mm)

