



REQUEST TO EXIT BUTTON

EXIT BUTTONS



MEXT-EBGB/PTE



MKOBO-EBGB/PTE



MKOBO-EBGB/PTENTER



MKOBO-EBGB/DR

Market leading green dome button, that is both hard wearing and cost effective. Suitable for use in applications up to 30V.

SPECIFICATION

MEXT / MKOBO

- Contacts: Double pole NONC
- Output: 4 AMP contact @ 30V ACDC
- Wear resistant legend
- High impact aluminium extrusion
- Vandal resistant
- Internal or External use
- Button rated IP66 ingress protection
- Silver contacts
- Operating temperature -20° to +60°c
- Operating travel: 2mm
- Contact resistance: 10m OHM (Max)
- Operating life (mechanical): 1,000,000

FEATURES

MEXT / MKOBO

- Large metal green button
- Momentary operation / contact
- Can be surface (MEXT) or flush fitting (MKOBO)
- Easy clean surface.
- Ideal for general / sensitive areas
- Screw footprint for flush fitting onto standard back box
- Distance between fixing holes 60mm
- Anti rotational mounting

OTHER PRODUCTS

EBNT/TF-1



2402/4TRS



DIMENSIONS

MEXT-EBGB/PTE

- 85H x 85W x 38D (mm)
- 462g (Boxed) • 422g (Unboxed)

MKOBO-EBGB/PTE

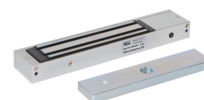
- 85H x 85W x 38D (mm)
- 360g (Boxed) • 318g (Unboxed)

CONTENTS

MEXT / MKOBO

- Green Dome Exit Button
- Stainless Steel Plate (2mm)
- 2 Screws
- Surface Aluminium Extrusion (MEXT)

ML600



DU-GB/PTE



Manufactured by a BSIA Member