



# PRODUCT CATALOGUE 25 YEARS

---

Access Control

# 25 YEARS OF RGL ELECTRONICS

Established in 1999, RGL Electronics Limited has emerged as a pioneering force in the field of access control and power supply solutions. With over two decades of dedicated expertise, we have consistently led the industry by providing innovative, reliable, and cutting-edge products tailored to the unique needs of our customers.



Located at Pelham Works, a historical building built in the 1890s for Rudge Wedge Cycles.

We continuously push the boundaries of technology to create cutting-edge access control and power supply solutions. Our passion for innovation drives us to develop products that are intuitive, adaptable, and built to withstand the evolving demands of the industry.

Quality is the cornerstone of our company. We understand the critical role our products play in security and access systems. That's why we uphold the highest standards of quality control, ensuring that every RGL product is built to last, even in the most demanding environments. Our rigorous quality control processes ensure that our customers receive nothing but the best.

Environmental responsibility is at the core of our mission. We are dedicated to minimising our environmental footprint through the development of energy-efficient products, sustainable manufacturing practices, and responsible sourcing of materials.



**1999 THE BEGINNING**  
Founded in 1999 by Ray, Geoff and Lindsay, RGL was originally established as a power supply manufacturer, supplying the Access Control, CCTV, Fire and Intruder markets. Bringing decades of knowledge of the security industries, the business soon started to grow with the recognition that they were bringing a high quality product to the market.

**2001 GROWTH**  
2001 saw the product portfolio grow dramatically. This year saw the introduction of a range of Exit Buttons. RGL were the first company to offer a cost effective surface back box with all their buttons, dramatically reducing the cost for the end user.  
2008 saw the introduction of the EBGBWC02, an innovative redesign of the classic green dome button.

**2011 RAPID EXPANSION**  
By 2011 RGL had established themselves in Europe, providing OEM manufacturing to a number of large companies. It also marked the year that we started to manufacture a number of other products. Maglocks were now part of the RGL range.  
This year also saw the power supplies moving from linear to switchmode.

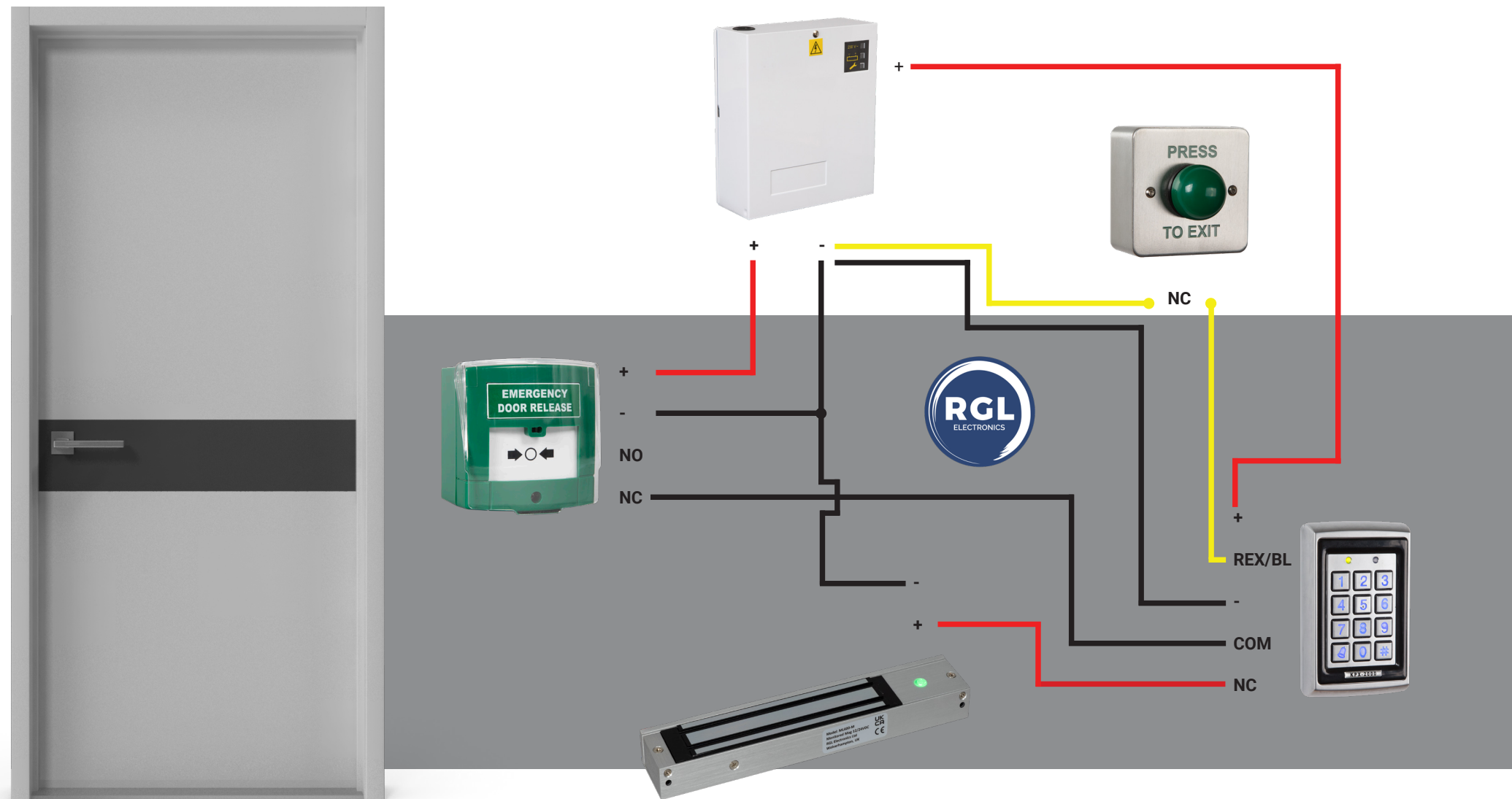
**2016 CONTINUED INNOVATION**  
Huge steps followed through the years. 2016 saw the entire range of maglocks and brackets Fire Tested. In 2017 we introduced the Safe & Easy Fit brackets, for single and double maglocks. 2020 saw a new range of upgradable power supplies arrive in the market. 2021 was the year that RGL rebranded, and changed the logo that had seen them through the previous 2 decades.

**2024 RAISING THE STANDARDS**  
Arriving in our 25th Year, we will see RGL bring more products to market, than any other year in our history. Making sure we continue to raise the quality and performance standards required in this industry.

## TABLE OF CONTENTS

- 05 Exit Devices
- 30 Keypads
- 34 Electronic Locking
- 53 Power Supplies
- 61 CCTV
- 65 Accessories
- 73 Access Kits
- 76 Fire Products
- 78 Finishes

# Accesskit



wiring diagram

# 01 EXIT DEVICES



### EBLS/AP/PTE

- Surface or flush fitting
- Changeover contact
- Rating: 10A contact @ 240V AC/DC
- Wear resistant legend
- Contains UV stabilisers
- IP54 rated switch
- 85x39x28 (mm)

#### EBLS/AP/DR (DOOR RELEASE)

Alternative option



### EBGB05P/PTE/W

- Surface or flush fitting
- Green dome button
- Double pole NO/NC contact
- Rating: 4amp contact @30V AC/DC
- Security screws (allen key type)
- Wear resistant legend
- Contains UV stabilisers
- IP54 rated switch
- 85x39x28 (mm)

#### EBGB05P/DR/W (DOOR RELEASE)

Alternative option



### EBGB01P/PTE/W

- Surface or flush fitting
- High impact plastic back box
- Green dome button
- Double pole NO/NC contact
- Rating 4amp contact @30V AC/DC
- Security screws (allen key type)
- Wear resistant legend
- Contains UV stabilisers
- 85x85x28 (mm)

#### EBGB01P/DR/W (DOOR RELEASE)

Alternative option



### EBLS/PTE

- Surface or flush fitting
- Changeover contact
- Rating: 10amp contact @240V AC/DC
- Wear resistant legend
- Contains UV stabilisers
- 85x85x28 (mm)

Antibacterial Certified:  
• All RGL EBLs range of white moulded exit buttons are manufactured using Urea Formaldehyde, which destroys 99.9% of MRSA, E-Coli, Salmonella and Klebsiella Pneumoniae

#### EBLS/DR (DOOR RELEASE)

Alternative option



### EBWLS/PTE

- Surface or flush fitting
- Changeover contact
- Rating: 10amp contact @240V AC/DC
- Wear resistant legend
- Contains UV stabilisers
- 85x85x28 (mm)

Antiviral Certified:  
• All RGL EBLs range of white moulded exit buttons were shown to have a 99.9% kill off rate against enveloped viruses and a 92% kill off rate against non-enveloped viruses

#### EBWLS/DR (DOOR RELEASE)

Alternative option



### EBSS/AP/ED

Alternative option  
No text - Exit Route



### PBB04/GN

Architrave back box  
85x39x28 (mm)



### EXTR04

Architrave extrusion  
84x40x40 (mm)



### EBGB/AP/PTE

- Surface or flush fitting
- Vandal resistant
- Stainless steel
- Green dome button
- Double pole NO/NC contact
- Rating: 4amp contact @30V AC/DC
- Security screws (allen key type)
- Wear resistant legend
- IP66 rated switch
- 85x39x28 (mm)

#### EBGB/AP/DR (DOOR RELEASE)

Alternative option



### EBSS/AP/PTE

- Surface or flush fitting
- Vandal resistant
- Stainless steel plate
- Stainless steel button
- Double pole NO/NC contact
- Rating: 4 amp contact @30V AC/DC
- Security screws (allen key type)
- Wear resistant legend
- IP54 rated switch
- 85x39x28 (mm)

#### EBSS/AP/DR (DOOR RELEASE)

Alternative option



**EBGBWC02/PTE**

- Surface or flush fitting
- Stainless steel plate
- Green dome button (with collar)
- Anti rotational mounting
- Double pole NO/NC contact
- Rating: 4amp contact @30V AC/DC
- Security screws (allen key type)
- Wear resistant legend
- IP66 rated switch
- 85x85x32 (mm)

**EBGBWC02/DR**

Alternative option



**EBGBWOC02/PTE**

- Surface or flush fitting
- Stainless steel plate
- Green dome button
- Anti rotational mounting
- Double pole NO/NC contact
- Rating 4A contact @30V AC/DC
- Security screws (allen key)
- Wear resistant legend
- IP66 rated switch
- 85x85x32 (mm)

**EBGBWOC02/DR**

Alternative option



**MEXT-EBGB/PTE**

- Large metal green button
- Momentary operation
- Contacts: Double pole NO/NC
- Output: 4A contact @30V AC/DC
- Wear resistant legend
- High impact aluminium extrusion
- IP67 rated switch
- 85x85x38/63 (mm)



**MKOBO-EBGB/PTE**

- Large metal green button
- Momentary operation
- Contacts: Double pole NO/NC
- Output: 4amp contact @30V AC/DC
- Wear resistant legend
- IP67 rated switch
- 85x85x35/63 (mm)



**G-EBGB/PTE**

Easy clean green plastic surface mounted with vandal resistant button, includes back box with security screws. Greater than 1m operations. IP66 (Size 85h x 85w x 32d)



**G-EBSS02/PTE**

Easy clean green plastic with Large Green button surface mounted, includes back box with security screws. Greater than 1m operations. Switch only IP54 (Size 85h x 85w x 32d)



**EBSS02/PTE**

- Surface or flush fitting
- Stainless steel plate
- Stainless steel button (21mm)
- Double pole NO/NC contact
- Rating: 4amp contact @30V AC/DC
- Security screws (allen key type)
- Wear resistant legend
- Vandal resistant
- IP54 rated switch
- 85x85x32 (mm)

**EBSS02/DR**

Alternative option



**EBSS25/PTE**

- Surface or flush fitting
- Stainless steel plate
- Stainless steel button (25mm)
- Double pole NO/NC contact
- Rating: 4A contact @30V AC/DC
- Security screws (allen key)
- Wear resistant legend
- Vandal resistant
- IP54 rated switch
- 85x85x32 (mm)



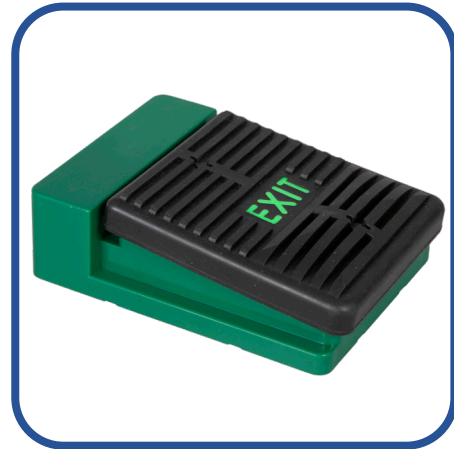
**MKOBO-EBGB/DR**

- Large metal green button
- Momentary operation
- Contacts: Double pole NO/NC
- Output: 4A contact @30V AC/DC
- Wear resistant legend
- IP67 rated switch
- 85x85x35/63 (mm)



**MKOBO-EBGB/PTENTER**

- Large metal green button
- Momentary operation
- Contacts: Double pole NO/NC
- Output: 4amp contact @30V AC/DC
- Wear resistant legend
- IP67 rated switch
- 85x85x35/63 (mm)



### STE-P

- Step to Exit plate/device
- Contacts: Double pole NONC
- Output: 4A contact @ 30V AC/DC
- High impact plastic back box
- Moulded rubber surface
- Security screws (allen key type)
- Can be fitted to wall or floor (kick plate or foot plate)
- Distance between fixing: 60mm
- 120x90x35 (mm)



### EBSS-TRADES

- Surface or flush fitting
- Stainless steel plate
- Stainless steel button
- Vandal resistant
- Double pole NO/NC contact
- Rating: 4A contact @30V AC/DC
- Wear resistant legend
- IP54 rated switch
- 85x85x35 (mm)



### K-RB-FAS

- Flush fitting
- Stainless steel plate
- Red dome button
- Anti rotational mounting
- Double pole NO/NC contact
- Rating: 4amp contact @30V AC/DC
- Wear resistant legend
- IP66 rated switch
- 85x85x35 (mm)
- Can be surface fitted with range of RGL back boxes and extrusions



### K-RB-PFA

- Flush fitting
- Stainless steel plate
- Red dome button
- Anti rotational mounting
- Double pole NO/NC contact
- Rating: 4amp contact @30V AC/DC
- Wear resistant legend
- IP66 rated switch
- 85x85x35 (mm)
- Can be surface fitted with range of RGL back boxes and extrusions



### EBPP02

- Surface or flush fitting
- Stainless steel plate
- Large 360° push plate
- Double pole NO/NC contact
- Rating : 4amp contact @30V AC/DC
- Security screws (allen key type)
- Machine cut legend
- IP55 rated switch
- 85x85x32 (mm)



### EBPP02P/W

- Surface or flush fitting
- White plastic
- Large 360° push plate
- Double pole NO/NC contact
- Rating : 4A contact @30V AC/DC
- Security screws (allen key)
- Machine cut legend
- IP55 rated switch
- 94x94x28 (mm)



### F-EBRB/EPTE

- Flush fitting
- Stainless steel plate
- Red dome button
- Anti rotational mounting
- Double pole NO/NC contact
- Rating: 4amp contact @30V AC/DC
- Wear resistant legend
- IP66 rated switch
- 85x85x35 (mm)
- Can be surface fitted with range of RGL back boxes and extrusions



### EBB02/PFA

- Flush fitting
- Stainless steel plate
- Blue dome button
- Anti rotational mounting
- Double pole NO/NC contact
- Rating: 4amp contact @30V AC/DC
- Wear resistant legend
- IP66 rated switch
- 85x85x35 (mm)
- Can be surface fitted with range of RGL back boxes and extrusions

ALL PRODUCTS CAN BE MADE AVAILABLE WITH A BLANK PLATE IF REQUIRED



### EBPP02P/DDA

- Surface or flush fitting
- Large 360° push plate
- Double pole NO/NC contact
- Rating : 4amp contact @30V AC/DC
- Security screws (allen key type)
- Wear resistant legend
- Complies with BS8300
- IP55 Rated
- Version without text available (EBLPP02P/DDA/WOPTO)
- 94x94x36 (mm)
- EBLPP02P/W 118x118x53 (mm)



### EBJS-01

- Surface or flush fitting
- Stainless steel push plate
- Double pole NO/NC
- Rating : 4 amp contact @30V AC/DC
- Complies with BS8300
- Security screws (allen key)
- IP65 rated switch
- 120x50x47D (mm)



### WP66-Y/ES

- IP66 rated switch and enclosure
- Large red twist to release button
- Maintained operation
- Contacts: Single Pole NO/COM/NC
- Output: 5 AMP contact @ 24V AC/DC
- Wear resistant legend (EMERGENCY STOP)
- External use
- 60/80x85x86 (mm)



### WP66-Y/TTO

- IP66 rated switch and enclosure
- Large red twist to release button
- Maintained operation
- Contacts: Single Pole NO/COM/NC
- Output: 5 AMP contact @ 24V AC/DC
- Wear resistant legend (TWIST TO OPEN)
- External use
- 60/80x85x86 (mm)



### EBLPP04/PTO

Push to Open



### SSBB03

Stainless Steel (use with EBLPP02)



### PBB03/BK

Black Plastic (use with EBLPP02)



### WP66-Y-RB/PA

- IP66 rated switch and enclosure
- All plastic large red button
- Momentary operation
- Contacts: Double Pole NO/NC
- Output: 4 AMP contact @ 30V AC/DC
- Wear resistant legend (PANIC ALARM)
- External use
- 60/80x85x86 (mm)



### WP66-G-GB/GR

- IP66 rated switch and enclosure
- All plastic large green button
- Momentary operation
- Contacts: Double Pole NO/NC
- Output: 4 AMP contact @ 30V AC/DC
- Wear resistant legend (GATE RELEASE)
- External use
- 60/80x85x86 (mm)



### WP66-G-GB/PTO

- IP66 rated switch and enclosure
- All plastic large green button
- Momentary operation
- Contacts: Double Pole NO/NC
- Output: 4 AMP contact @ 30V AC/DC
- Wear resistant legend (PUSH TO OPEN)
- External use
- 60/80x85x86 (mm)



### WP66-G-GB/PTE

- IP66 rated switch and enclosure
- All plastic large green button
- Momentary operation
- Contacts: Double Pole NO/NC
- Output: 4 AMP contact @ 30V AC/DC
- Wear resistant legend (PRESS TO EXIT)
- External use
- 60/80x85x86 (mm)



### EBLPP02

- Flush fitting as standard
- Surface fitting (SSBB03 or PBB03/BK)
- Stainless steel 360° push plate
- Double pole NO/NC contact
- Rating : 4amp contact @30V AC/DC
- Complies with BS8300
- Security screws (allen key type)
- 114x114x36 (mm)



### EBLPP04

- Surface or flush fitting
- Stainless steel push plate
- Double pole NO/NC
- Rating : 4 amp contact @30V AC/DC
- Complies with BS8300
- Security screws (allen key)
- IP65 rated switch
- 129x129x54 (mm)



### WP66-G-GB/DR

- IP66 rated switch and enclosure
- All plastic large green button
- Momentary operation
- Contacts: Double Pole NO/NC
- Output: 4 AMP contact @ 30V AC/DC
- Wear resistant legend (DOOR RELEASE)
- External use
- 60/80x85x86 (mm)



### WP66-G-SS/PTE

- IP66 rated enclosure (IP65 rated switch)
- Large stainless steel button
- Momentary operation
- Contacts: Double Pole NO/NC
- Output: 4 AMP contact @ 30V AC/DC
- Wear resistant legend (PRESS TO EXIT)
- External use
- 60/80x85x86 (mm)



### SSBC120

- Stainless Steel Button Cover
- Etched Legend - EXIT BUTTON
- Wear resistant legend
- Internal or External use
- For use with any RGL External Exit Button
- Extra deep enclosure for easy operation
- 100 x 100 x 120 (mm)



### WP66-G-ILG/PTO

- IP66 rated enclosure (IP68 rated switch)
- 25mm Green illuminated piezo switch
- Momentary operation
- 12-24VDC
- Contacts: Single pole NO/COM
- Output: 4 AMP contact @ 30V AC/DC
- Wear resistant legend (PUSH TO OPEN)
- 60/80x85x86 (mm)
- Only use with keypad or controller



### WP66-G-ILG/GR

- IP66 rated enclosure (IP68 rated switch)
- 25mm Green illuminated piezo switch
- Momentary operation
- 12-24VDC
- Contacts: Single pole NO/COM
- Output: 4 AMP contact @ 30V AC/DC
- Wear resistant legend (GATE RELEASE)
- 60/80x85x86 (mm)
- Only use with keypad or controller



### EBNT/TF-1

- No touch infra red switch
- Illuminated sensor - Green to Red
- Colours can be reversed
- Hands free operation
- 12-24VDC
- Security screws (allen key type)
- Wear resistant legend
- Adjustable opening times (0.5 to 20s)
- Adjustable prox distance (3-12cm)
- 85x85x32 (mm)



### EBNT/TF-4

- 35mm touch free sensor button
- 2amp relay
- Illumination - Red to Green
- Made with anti bacterial plastic
- Can be surface or flush fitting
- Momentary operation
- 12VDC
- Ideal for general/sensitive areas
- Supplied with 2 slotted screws
- 85x85x32 (mm)



### EBTF/DR

- No touch infra red switch
- Relay opening times (upto 20secs)
- Proximity distance (3 to 12cm)
- Illuminated sensor Green/Red
- Legend: DOOR RELEASE



### EBNT/AP/TF

- No touch infra red switch
- Relay opening times (upto 20secs)
- Proximity distance (3 to 12cm)
- Illuminated sensor Green/Red
- Hands free operation
- 12-24VDC



### EXTR04 Architrave extrusion



### WP-EBGBWC02/PTE

- IP66 rated weatherproof button
- Green dome button
- High impact plastic back box
- Gasket and gland included
- Momentary operation
- Contacts: Double pole NO/NC
- Output: 4AMP contact @ 30V AC/DC
- Wear resistant legend
- Security screws (allen key type)
- 85x85x40/50 (mm)



### WP-EBSS25/PTO

- IP65 rated weatherproof button
- Stainless steel button
- High impact plastic back box
- Gasket and gland included
- Momentary operation
- Contacts: Double pole NO/NC
- Output: 4 AMP contact @30V AC/DC
- Wear resistant legend
- Security screws (allen key type)
- 85x85x40/50 (mm)

**PRESS TO EXIT LEGEND AVAILABLE**  
**BLANK LEGEND AVAILABLE**



### EBNT/TF-1PLUS

- 35mm touch free sensor button
- 2amp relay
- Illumination - Red to Green
- 12-24VDC
- Supplied with surface back box
- Can be surface or flush fitting
- Momentary operation
- Ideal for general/sensitive areas
- Supplied with 2 slotted screws
- 85x85x32 (mm)



### WP-EBNT/TF-1

- No touch infra red switch
- Weatherproof IP65 rated
- Illuminated sensor - Green to Red
- Colours can be reversed
- Hands free operation
- 12-24VDC
- Security screws (allen key type)
- Wear resistant legend
- Adjustable opening times
- Adjustable prox distance (3-12cm)
- 85x85x32 (mm)
- Includes gasket and cable gland





### K-PIL-BS/PFA

- Flush fitting
  - Stainless steel plate
  - IP68 rated switch
  - 25mm illuminated piezo switch
  - Momentary operation
  - 12-24VDC
  - Contacts: Single pole NO/COM
  - Output: 200mA @ 24V AC/DC
  - Wear resistant legend
  - Internal or External use
  - 85x85x35 (mm)
- Only use with keypad or controller



### K-PIL-RS/EPTE

- Flush fitting
  - Stainless steel plate
  - IP68 rated switch
  - 25mm illuminated piezo switch
  - Momentary operation
  - 12-24VDC
  - Contacts: Single pole NO/COM
  - Output: 200mA @ 24V AC/DC
  - Wear resistant legend
  - Internal or External use
  - 85x85x35 (mm)
- Only use with keypad or controller



### K-ILH-GS/DR

- IP65 rated switch
- 25mm illuminated switch
- 12VDC
- Double pole NO/NC
- Double Throw
- Internal or External use
- 85x85x35 (mm)



### K-AP-ILH-GS/PTE

- IP65 rated switch
- 25mm illuminated switch
- 12VDC
- Double pole NO/NC
- Double Throw
- Internal or External use
- 85x39 (mm)



### K-PIL-GS/PTE

- Flush fitting
  - Stainless steel plate
  - IP68 rated switch
  - 25mm illuminated piezo switch
  - Momentary operation
  - 12-24VDC
  - Contacts: Single pole NO/COM
  - Output: 200mA @ 24V AC/DC
  - Wear resistant legend
  - Internal or External use
  - 85x85x35 (mm)
- Only use with keypad or controller



### K-ILH-GS/PTE

- Flush fitting
- Stainless steel plate
- IP65 rated switch
- 25mm illuminated piezo switch
- Momentary operation
- 12VDC
- Contacts: Double pole NO/NC
- Double Throw
- Output: 5A @ 250V AC
- Wear resistant legend
- Internal or External use
- 85x85x35 (mm)



### VP-EBB

#### Self Resetting Emergency Exit

- Contacts: Double pole NONC
- Output: 4 AMP contact @ 30V AC/DC
- Vandal resistant
- Green dome button**
- Designed for normal operation, either momentary or using a standard time delay through your control unit.
- Stainless steel button**
- The emergency exit button will open the door for a minimum of 3 minutes, or more if required (when pressed)
- Supplied with RL03 timer relay



### SREB-YB

#### Emergency Exit Button

- Flush fitting
- Stainless steel plate
- IP65 rated switch
- Output: 4 AMP contact @ 30V AC/DC
- Double pole NO/NC contact
- Both contacts can be installed to provide a fail safe solution
- Use normally open circuit to trigger a timed exit on controller (Normally closed circuit will remove power to lock directly on a momentary basis)



### WL-24-EBLPP04-KIT

#### Wireless Push Plate

- Large push plates for ease of access
- Momentary operation
- High impact plastic back box
- Single channel
- 868Mhz Receiver
- Capable of pairing 40 transmitters to 1 receiver
- Able to work at up to 50mtrs (clear line of sight)
- Uses 1 x 9V PP3 Battery



### WL-24-EBJS-01-KIT

#### Wireless Push Plate

- Large push plates for ease of access
- Momentary operation
- High impact plastic back box
- Single channel
- 868Mhz Receiver
- Capable of pairing 40 transmitters to 1 receiver
- Able to work at up to 50mtrs (clear line of sight)
- Uses 2 x CR2016 3v Batteries

# EBGBWC02 GREEN DOME BUTTON

- ✓ high quality.  
stainless steel plate
- ✓ anti tamper.  
security screws
- ✓ double pole.  
ip66 switch
- ✓ back box.  
as standard





**WL-EBLPP04/BK**

- Stainless steel push plate
- Wireless operations (433Mhz)
- Rating : 4 amp contact @30V AC/DC
- Complies with BS8300
- Security screws (allen key type)
- Surface fitting
- Inbuilt transmitter
- Supplied with a 27A type replaceable battery
- Receiver - 12VDC
- 129x129x54 (mm)



**WL-EBLPP02/BK**

- Stainless steel 360° push plate
- Wireless operations (433Mhz)
- Rating: 4A contact @30V AC/DC
- Complies with BS8300
- Security screws (allen key type)
- Surface fitting with PBB03/BK
- Inbuilt transmitter
- Supplied with a 27A type replaceable battery
- Receiver - 12VDC
- 129x129x54 (mm)



**REC01**

Receiver  
433Mhz  
Single Channel



**TRAN01**

Transmitter



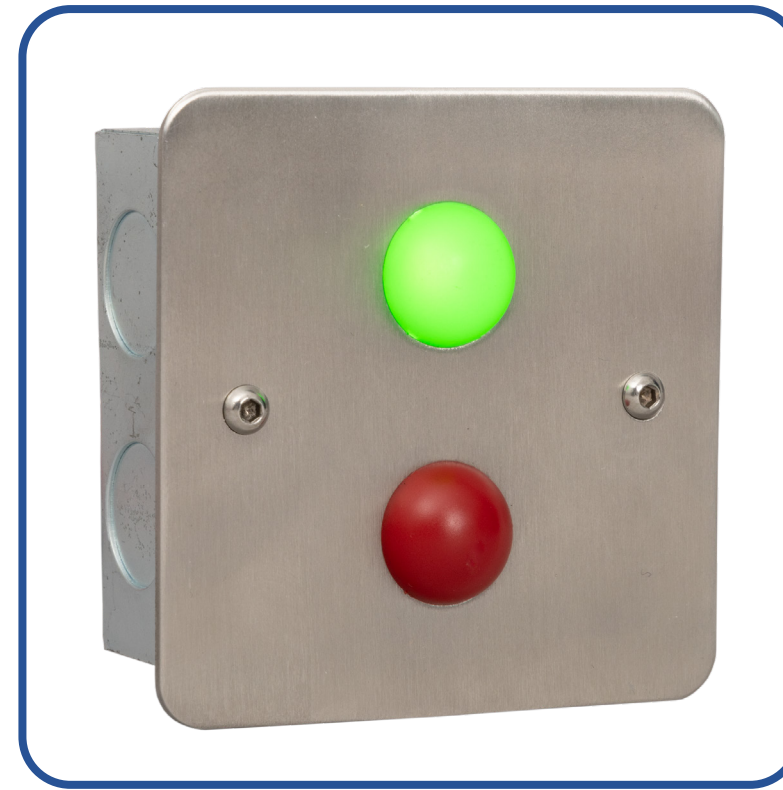
**WL-EBPP02P/W**

- Standard white plastic with large 360° surface mounted push plate
- Wireless operations (433Mhz)
- Rating : 4 amp contact @30V AC/DC
- Security screws (allen key type)
- Machine cut legend
- Surface fitting
- Inbuilt transmitter
- Supplied with a 27A type replaceable battery
- Receiver - 12VDC
- 94x94x28 (mm)



**TRAN/REC01**

- Wireless operations (433Mhz)
- 12VDC
- TRAN01 is a momentary device
- Relay contacts can be toggled
- Lock /Unlock buttons on remote
- Multiple transmitters can be used on each receiver
- Supplied with a 27A type replaceable battery
- 40x70x21 (mm) (REC01)



**TLI-85**

**Traffic Light Indicator**

- 12 - 24VDC
- Red or Green LED Indicator
- Operating Red or Green can be switched
- Security screws (allen key type)
- Operating current 20mA
- Comes flush as standard (can be fitted surface with EXTR03
- 85x85x15 (mm)



**TLI-45**

**Traffic Light Indicator**

- 12 - 24VDC
- Red or Green LED Indicator
- Operating Red or Green can be switched
- Security screws (allen key type)
- Operating current 20mA
- Can be fitted surface or flush as standard
- 120x50x47 (mm)

**KS-1 BLANK VERSION AVAILABLE**

- 2 Position Key Switch
- Latching operation
- High impact plastic back box
- Security screws (allen key type)
- Supplied with 2 x keys (2803)
- Voltage free contacts
- 12-24VDC
- 85x85x40/50 (mm)

**KS-2 BLANK VERSION AVAILABLE**

- 2 Position Key Switch
- Momentary operation
- High impact plastic back box
- Security screws (allen key type)
- Supplied with 2 x keys
- Voltage free contacts
- 12-24VDC
- 85x85x40/50 (mm)

**KS-3 BLANK VERSION AVAILABLE**

- 3 Position Key Switch
- Latching AUTO/OFF/OPEN operation
- Key removal in all positions
- Keyed alike
- Supplied with 2 x keys (606)
- Voltage free contacts
- NONC contacts > 1 million operations
- 85x85x40/50 (mm)

**KS-EURO**

- Euro profile key switch
- Latching changeover contacts
- Voltage free contacts
- Cylinder NOT supplied
- 12-24VDC
- 85x85 (mm)

**WP-KS1**

- IP65 Rated / Weatherproof
- 2 Position Latching operation
- Gasket and gland included
- High impact plastic back box
- Supplied with 2 x keys
- Voltage free contacts
- 12-24VDC
- 85x85x40/50 (mm)

**WP-KS2**

- IP65 Rated / Weatherproof
- 2 Position Momentary operation
- Gasket and gland included
- High impact plastic back box
- Supplied with 2 x keys
- Voltage free contacts
- 12-24VDC
- 85x85x40/50 (mm)

**G-KS-1**

- 2 Position Latching operation
- High impact plastic back box
- Security screws (allen key type)
- Supplied with 2 x keys (2803)
- Voltage free contacts
- 12-24VDC
- 85x85x40/50 (mm)

**W-KS-1**

- 2 Position Latching operation
- High impact plastic back box
- Security screws (allen key type)
- Supplied with 2 x keys (2803)
- Voltage free contacts
- 12-24VDC
- 85x85x40/50 (mm)

**ADD /BLANK TO THE END OF THE PART CODE FOR BLANK VERSION****JMB/KS-1**

- 2 Position Key switch
- Latching operation
- High impact plastic back box
- Security screws (allen key type)
- Supplied with 2 x keys (2803)
- Voltage free contacts
- 12-24VDC
- 120x50x47D (mm)

**JMB/KS-3**

- 3 Position Key switch
- Latching operation
- High impact plastic back box
- Security screws (allen key type)
- Supplied with 2 x keys (606)
- Voltage free contacts
- 12-24VDC
- 120x50x47D (mm)

**JMB/KS-4**

- 4 Position Key switch
- Latching operation - 4 way switch
- High impact plastic back box
- Security screws (allen key type)
- Supplied with 2 x keys (606)
- Voltage free contacts
- 12-24VDC
- 120x50x47D (mm)

**EXT/AP/KS-1**

- 2 Position Key switch
- Latching operation
- Aluminium extrusion
- Security screws (allen key type)
- Supplied with 2 x keys (2803)
- Voltage free contacts
- 12-24VDC
- 84x40x41D (mm)

**AVAILABLE WITHOUT BACKBOX (AP/KS-1)****EXT/AP/KS-2**

- 2 Position Key switch
- Momentary operation
- Aluminium extrusion
- Security screws (allen key type)
- Supplied with 2 x keys
- Voltage free contacts
- 12-24VDC
- 84x40x41D (mm)

**AVAILABLE WITHOUT BACKBOX (AP/KS-2)****EXT/AP/KS-3**

- 3 Position Key switch
- Latching operation
- Aluminium extrusion
- Security screws (allen key type)
- Supplied with 2 x keys (606)
- Voltage free contacts
- 12-24VDC
- 84x40x41D (mm)

**AVAILABLE WITHOUT BACKBOX (AP/KS-3)**

KEY NUMBERS	2803		606		A126	
2 Position - Latching	✓	DP	✓	DP	✓	SP/DT
3 Position - Latching			✓			
4 Position - Latching			✓			
2 Position - Momentary			✓	C		

KEY	
Double Pole	DP
Single Pole	SP
DP Double Throw	DT
Changeover	C



**EXTR02**

- Aluminium extrusion
- 38mm deep
- 85x85x38 (mm)
- Includes adjustable single gang box (35mm)
- 72x72x35 (mm)



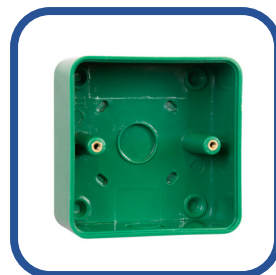
**EXTR04**

- Aluminium extrusion
- C Bracket included
- 85x38x45 (mm)



**SSBB02**

- 42mm stainless steel back box
- Single gang
- 85x85x42 (mm)



**PBB05/GN**

- 40mm back box
- Allows for conduit entry
- Use for all standard products
- Deeper Back Box
- 90x90x40 (mm)



**SSBB03**

- Stainless steel back box
- DDA surface box
- For use with EBLPP02
- Large DDA buttons
- 118x118x36 (mm)



**PBBSHR/BK  
PBBSHR/BK-45**

- 40mm back box (45mm also available)
- Allows for conduit entry
- Use for all standard products
- Deeper Back Box
- Available in Green, Black or White
- 90x90x40/45 (mm)



**PBB03/BK**

- Large plastic back box
- DDA surface box
- For use with EBLPP02
- Large DDA buttons
- 128x128x36 (mm)



**PBBJMB/BK**

- Large narrow style black back box
- Surface mounted
- For use with JMB and EBJs products
- 120x50x47 (mm)

**KS-EDR-S**



- Single Pole - NO/NC
- Latching on/off operation
- Keyed alike
- Supplied with 2 x A126 keys
- Voltage free contacts
- Etched legend (0-1)
- Contact Rating: 4A 125VAC & 2A 250VAC
- Contact Rating: 2A 12/24VDC
- 90 x 90 x 55/45 (mm)

**KS-EDR-D**



- Double Pole/Double Throw - NO/NC
- Latching on/off operation
- Keyed alike
- Supplied with 2 x A126 keys
- Voltage free contacts
- Etched legend (0-1)
- Contact Rating: 4A 125VAC & 2A 250VAC
- Contact Rating: 2A 12/24VDC
- 90 x 90 x 55/45 (mm)



**KSA126-KEY**

**KS-CP-S**



- Single Pole - NO/NC
- Latching on/off operation
- Keyed alike
- Supplied with 2 x A126 keys
- Voltage free contacts
- Etched legend (0-1)
- Contact Rating: 4A 125VAC & 2A 250VAC
- Contact Rating: 2A 12/24VDC
- 90 x 90 x 55/45 (mm)

**KS-CP-D**



- Double Pole/Double Throw - NO/NC
- Latching on/off operation
- Keyed alike
- Supplied with 2 x A126 keys
- Voltage free contacts
- Etched legend (0-1)
- Contact Rating: 4A 125VAC & 2A 250VAC
- Contact Rating: 2A 12/24VDC
- 90 x 90 x 55/45 (mm)

# dual units

## original all in one dual unit

saves fitting time and space by combining the exit button and emergency door release into one unit



**touch free button**  
infra red button, includes time delay

**green dome button**

**security screws**  
allen key required to undo face plate



**triple pole**  
comes as standard on all dual units

**led**  
visual indication of unit being activated

**plastic cover**  
anti tamper cover comes as standard



**reset key**  
comes with 2 keys



**stainless steel**  
25mm stainless steel button

**buzzer**  
audible indication of unit being activated

## DU-GB/PTE



- Stainless steel
- Green dome button
- Combined emergency door release button (resettable)
- Buzzer and LED indication
- Triple pole as standard
- 12-24VDC
- Wear resistant legend
- Security screws (allen key type)
- 160x90x42/37 (mm)

## DU-SS/PTE



- Stainless steel
- Stainless steel button (25mm)
- Combined emergency door release button (resettable)
- Buzzer and LED indication
- Triple pole as standard
- 12-24VDC
- Wear resistant legend
- Security screws (allen key type)
- 160x90x42/37 (mm)

## DU-COVER

Replacement Cover



## RESETKEY-V2

Replacement Keys  
Sold in bags of 10



## DU-NT/TF



- Stainless steel
- Illuminated sensor
- Combined emergency door release button (resettable)
- Buzzer and LED indication
- Triple pole as standard
- 12-24VDC
- Wear resistant legend
- Security screws (allen key type)
- Adjust opening times (0.5 to 20secs)
- Adjustable proximity (3 to 12cm)
- 160x90x42/37 (mm)

## DU-KS/1



- Stainless steel
- Latching key switch
- Combined emergency door release
- Buzzer and LED indication
- Triple pole as standard
- 12-24VDC
- Wear resistant legend
- Security screws (allen key type)
- 160x90x42/37 (mm)

## DU-KS/2

Alternative momentary key switch



**EDR-1N**

**Emergency Door Release**

- Single pole
- Emergency door release (resettable)
- Key reset (not replacement glass)
- Protective plastic cover (flips up)
- Warning buzzer and LED indication
- 12-24VDC
- Single pole allows you to remove the positive supply
- 88x88x51 (mm)



**EDR-2N**

**Emergency Door Release**

- Double pole
- Emergency door release (resettable)
- Key reset (not replacement glass)
- Protective plastic cover (flips up)
- Warning buzzer and LED indication
- 12-24VDC
- Double pole allows you to remove the positive AND negative supply
- 88x88x51 (mm)



**EDR-3N**

**Emergency Door Release**

- Triple pole
- Emergency door release (resettable)
- Key reset (not replacement glass)
- Protective plastic cover (flips up)
- Warning buzzer and LED indication
- 12-24VDC
- Triple pole allows you to remove the positive AND negative supply, as well as an ancillary device
- 88x88x51 (mm)



**EDR-COVER-N**

**RESETKEY-V2**



**FMS-SURF**

**Fireman Switch**

- Stainless steel
- NO/COM/NC
- Changeover contacts
- Tamper proof fixings
- Drop key units
- Key not included with units
- Surface unit
- 127x157x76 (mm)

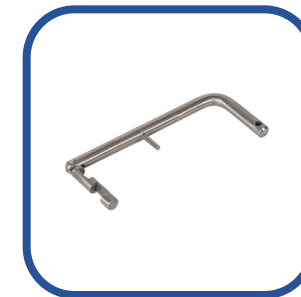


**FMS-FLUSH**

**Fireman Switch**

- Stainless steel
- NO/COM/NC
- Changeover contacts
- Tamper proof fixings
- Drop key units
- Key not included with units
- Flush unit
- 125x155x76 (mm)
- 130x100x75 (mm) (cut out dimensions)

**FMS-KEY**



# 02 KEYPADS

## KP1000



- Internal
- External keypad (with rainshield)
- Zinc alloy electroplated casing
- 4 digit pins
- Alarm input / door bell
- Allows upto 500 users
- 12VDC
- LED Indication
- Selectable back light
- Dual relay
- 120x76x25 (mm)

## KP-LOCKBOX



- Lockable keypad box
- Internal plate is pre-drilled to suit a number of control panel keypads
- 2 keys supplied
- Key removable in both positions
- White powder coated
- Hinged lid
- 205x190x55 (mm)

## KP-CARD

Replacement Cards



## KP-FOB-BE

Replacement Fobs



## RAINSHIELD

Architrave extrusion



## KPX1000



- Internal
- External keypad (with rainshield)
- Zinc alloy electroplated casing
- 4 digit pins
- Proximity weigand reader
- Allows upto 500 users
- 12VDC
- LED Indication
- Selectable back light
- Dual relay
- Comes with 5 fobs
- 120x76x25 (mm)

## WL-KP35



- Wireless keypad
- 433.92MHz - 2 Channel
- IP54 Rated
- Rolling code
- Operates upto 100m
- 93x73x43 (mm)

- REC-35
- Receiver
  - Stores 300 codes
  - 12-24V AC/DC
  - Contact 1A 30VDC

## REC-35







## KP50

- Robust heavy duty keypad
- IP65 rated
- 4-8 digit pins
- Stainless steel faceplate and keys
- Metal surface black box
- Ideal for external surface mounting
- LED indication
- Metal backlit keys
- Latching output
- Relay output time
- Visitor codes
- 12/24V AC/DC max 150mA
- Dual relay
- Up to 1000 unique users
- 125x79x46/54 (mm)



## KPX50

- Proximity keypad (Wiegand)
- Compatible with 125KHz EM cards and fobs
- Robust heavy duty keypad
- IP65 rated
- 4-8 digit pins
- Stainless steel faceplate and keys
- Metal external surface black box
- Ideal for surface mounting
- LED indication
- Metal backlit keys
- Latching output
- Relay output time
- Visitor codes
- 12/24V AC/DC max 150mA
- Dual relay
- Up to 1000 unique users
- 140x79x46/54 (mm)



## KPX75

- Proximity keypad (Wiegand)
- Compatible with 125KHz EM cards and fobs
- Robust heavy duty keypad
- IP65 rated
- 4-8 digit pins
- Stainless steel faceplate and keys
- Metal backlit keys
- Latching output
- Relay output time
- Visitor codes
- Ideal for external surface mounting
- LED indication
- 12VDC max 95mA
- Dual relay
- Up to 1000 users
- 180x46x21/25 (mm)

## PX2000



- Power supply with keypad
- Input for wiegand reader (RD26-C included)
- Allows up to 500 users
- 13.8VDC reg output (1 amp)
- Additional battery charging
- Max battery up to 12V 3.1Ah
- Comes with 5 fobs
- 265x197x72 (mm)

## KPX2000



- Internal
- External keypad (with rainshield)
- Zinc alloy electroplated casing
- Proximity reader
- 4 digit pins
- Input for external wiegand reader (RD26-C)
- Alarm input/Door bell
- Allows up to 500 users
- 12VDC
- Selectable backlight
- Comes with 5 fobs
- 120x76x25 (mm)

## KP-CARD

Replacement Cards



## RD-26C

Wiegand Reader

- Fully encapsulated to IP65
- 9-12VDC @ max 50 Ma
- 26 bit EM formatted reader
- Wiegand 4 wire connection
- Operating frequency 125kHz
- Must be used with controller e.g. KPX2000 or PX2000



## SPX-26M



- Standalone Proximity Reader
- 12-24V DC operating voltage
- Vandal Resistant
- IP66 rated
- 2000 card user capacity
- 3-10cm proximity read range
- One relay (NO, NC, Common)
- 2amp maximum lock output
- Pulse mode and toggle mode
- EM proximity card reader
- 125kHz card only
- 0-99 seconds adjustable relay

## SPX-26P



- Standalone Proximity Reader
- 12-24V DC operating voltage
- 40mA current draw
- IP66 rated
- 2000 card user capacity
- 3-10cm proximity read range
- One relay (NO, NC, Common)
- 2amp maximum lock output
- Pulse mode and toggle mode
- EM proximity card reader
- 125kHz card only
- 0-99 seconds adjustable relay

# 03 MAGNETIC LOCKS

## ML600



- Slimline / Mini magnet
- 600lbs (280kg) holding force
- Aluminium housing
- 12/24VDC @480/240mA
- Fire tested to BSEN1634-1-2014
- 30, 60, 90 & 120 min timber door sets
- 250x42x25 (mm)

## ML600-D



- Slimline / Mini magnet
- 280kgs (600lb) holding force
- Aluminium housing
- 12/24VDC @480/240mA
- Fire tested to BSEN1634-1-2014
- 30, 60, 90 & 120 min timber door sets
- 500x42x25 (mm)



## AH600

Surface Armature Housing



## BK600ZL

Adjustable Z & L Bracket

Use on inward opening doors  
Fire tested to: BSEN1634-1-2014  
30, 60, 90, 120 minute doors



## BK600L

Adjustable L Bracket

Use on outward opening doors  
Fire tested to: BSEN1634-1-2014  
30, 60, 90, 120 minute doors

## ML600-M



- Slimline / Mini magnet
- ML600-M inc monitoring contact
- Hall sensor monitoring with relay output NO/COM/NC
- Fire tested to BSEN1634-1-2014
- 30, 60, 90 & 120 min timber door sets
- 250x42x25 (mm)

## ML600-MDS

• Door Status Maglock  
(Plus ML600-M Spec)

## ML600-D-M



- Slimline / Mini magnet
- ML600-D-M inc monitoring contact
- Hall sensor monitoring with relay output NO/COM/NC
- Fire tested to BSEN1643-1-2014
- 30, 60, 90 & 120 min timber door sets
- 500x42x25 (mm)

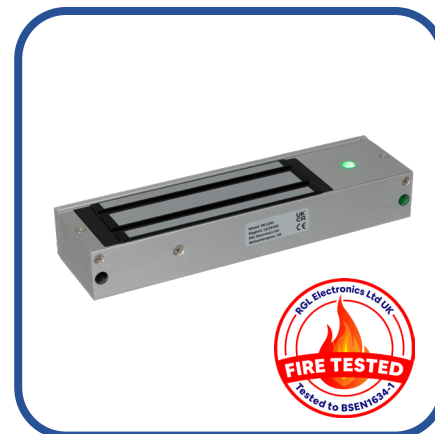
## ML600-D-MDS

• Door Status Maglock  
(Plus ML600-D-M Spec)



## ML1200

- Standard magnet
- 1200lbs (545kg) holding force
- Aluminium housing
- 12/24VDC @600/300mA
- Built in surge protection
- Fire tested to BSEN1634-1-2014
- 30, 60, 90 & 120 min timber door sets
- 267x73x40 (mm)



## ML1200-M

- Standard magnet
- 1200lb (545kg) holding force
- Aluminium housing
- 12/24VDC @600/300mA
- Built in surge protection
- Hall sensor monitoring with relay output
- NO/COM/NC
- Fire tested to BSEN1634-1-2014
- 30, 60, 90 & 120 min timber door sets
- 267x73x40 (mm)



## ML1200-MDS

- Door Status Maglock
- 1200lb (545kg) holding force
- Aluminium housing
- 12/24VDC @600/300mA
- Built in surge protection
- Hall sensor monitoring with relay output
- NO/COM/NC
- Fire tested to BSEN1634-1-2014
- 30, 60, 90 & 120 min timber door sets
- 267x73x40 (mm)



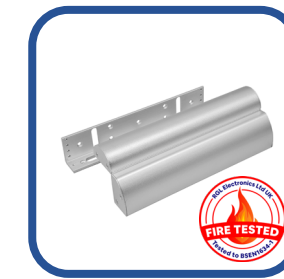
## ML1200-D-M

- Standard magnet
- 1200lb (545kg) holding force
- Aluminium housing
- 12/24VDC @600/300mA
- Built in surge protection
- Hall sensor monitoring with relay output
- NO/COM/NC
- Fire tested to BSEN1634-1-2014
- 30, 60, 90 & 120 min timber door sets
- 530x73x40 (mm)



## ML1200-D-MDS

- Door Status Maglock
- 1200lb (545kg) holding force
- Aluminium housing
- 12/24VDC @600/300mA
- Built in surge protection
- Hall sensor monitoring with relay outputs
- NO/COM/NC
- Fire tested to BSEN1634-1-2014
- 30, 60, 90 & 120 min timber door
- 530x73x40 (mm)



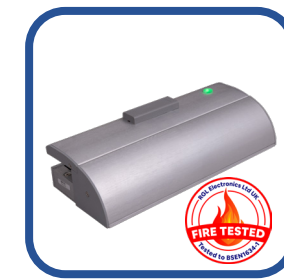
## AB600ZL-DC

- Architectural Z & L bracket
- Adjustable to suit different applications
- Cover screws and bolts (no visible fixings)
- Covers entire length of maglock
- Use on inward opening doors
- Aesthetically improves maglock
- 30, 60, 90 & 120 minute timber door sets



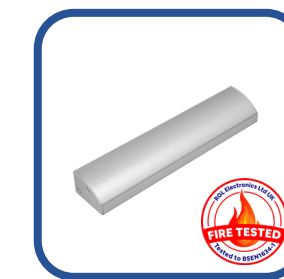
## BK600-F-L/AB

- Architectural bracket
- Adjustable to suit different applications
- Cover screws and bolts (no visible fixings)
- Covers entire length of maglock
- Use on inward opening doors
- Aesthetically improves maglock
- 30, 60, 90 & 120 minute timber door sets



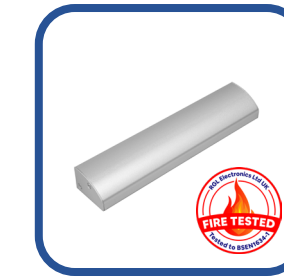
## BK1200-F-L/AB

- Architectural bracket
- Adjustable to suit different applications
- Cover screws and bolts (no visible fixings)
- Covers entire length of maglock
- Use on inward opening doors
- Aesthetically improves maglock
- 30, 60, 90 & 120 minute timber door sets



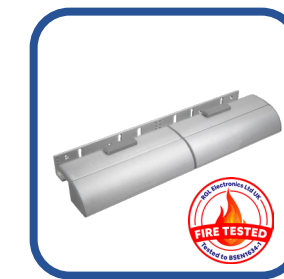
## AB1200CL

- Architectural L brackets
- Adjustable to suit different applications
- Cover screws and bolts (no visible fixings)
- Covers entire length of maglock
- Use on outward opening doors
- Aesthetically improves maglock
- 30, 60, 90 & 120 minute timber door sets



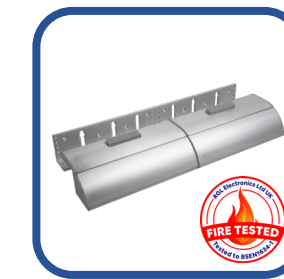
## AB600CL

- Architectural L brackets
- Adjustable to suit different applications
- Cover screws and bolts (no visible fixings)
- Covers entire length of maglock
- Use on outward opening doors
- Aesthetically improves maglock
- 30, 60, 90 & 120 minute timber door sets



## BK600-D-FL/AB

- Specially designed architectural bracket slots that allow for a simple one person installation of double maglocks
- Available for all ML600-D range
- Fully adjustable brackets
- Anodised aluminium finish
- Use on inward opening doors
- 30, 60, 90 & 120 minute timber door sets



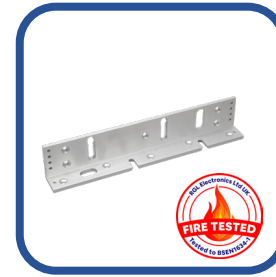
## BK1200-D-FL/AB

- Specially designed architectural bracket slots that allow for a simple one person installation of double maglocks
- Available for all ML1200-D range
- Fully adjustable brackets
- Anodised aluminium finish
- Use on inward opening doors
- 30, 60, 90 & 120 minute timber door sets



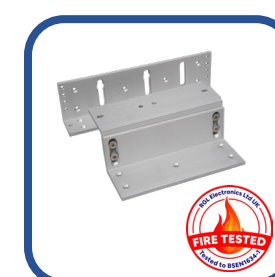
### BK600ZL

- Adjustable Z & L bracket
- Suitable for ML600 range of magnets
- Use on inward opening doors
- Fire tested to BSEN1634-1-2014
- 30, 60, 90 & 120 minute timber door sets



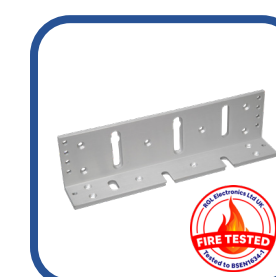
### BK600L

- Adjustable L bracket
- Suitable for ML600 range of magnets
- Use on outward opening doors
- Fire tested to BSEN1634-1-2014
- 30, 60, 90 & 120 minute timber door sets



### BK1200ZL

- Adjustable Z & L bracket
- Suitable for ML1200 range magnets
- Use on inward opening doors
- Fire tested to BSEN1634-1-2014
- 30, 60, 90 & 120 minute timber door sets



### BK1200L

- Adjustable L bracket
- Suitable for ML1200 range of magnets
- Use on outward opening doors
- Fire tested to BSEN1634-1-2014
- 30, 60, 90 & 120 minute timber door sets



### ADJ-600L

- Allows increased adjustment and positioning
- Very easy to fit and drastically reduces the installation time
- Simple to adjust magnet position
- Incorporates a cavity and cut out to make cabling easier
- Use on outward opening doors
- 30, 60, 90 & 120 minute timber door sets



### BK600-D-ZL

- Specially designed bracket slots that allow for a simple one person installation of double maglocks
- Available for all ML600-D range
- Fully adjustable brackets
- Anodised aluminium finish
- Use on inward opening doors
- 30, 60, 90 & 120 minute timber door sets



### ADJ-1200L

- Allows increased adjustment and positioning
- Very easy to fit and drastically reduces the installation time
- Simple to adjust magnet position
- Incorporates a cavity and cut out to make cabling easier
- Comes completely assembled
- 30, 60, 90 & 120 minute timber door sets



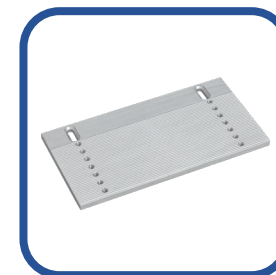
### AH1200

- Surface Armature housing
- Light and strong aluminium armature
- Multiple fixing holes for holding strength
- Supplied with fixing screws
- Supplied with armature securing bolt
- 30, 60, 90 & 120 minute timber door sets
- Removes the need to drill through door
- 196x72x19 (mm)



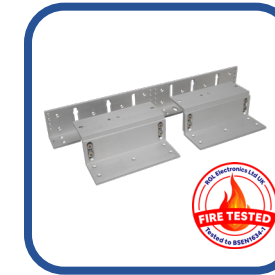
### BK600-D-L

- Specially designed bracket slots that allow for a simple one person installation of double maglocks
- Available for all ML600-D range
- Fully adjustable brackets
- Anodised aluminium finish
- Use on outward opening doors
- 30, 60, 90 & 120 minute timber door sets



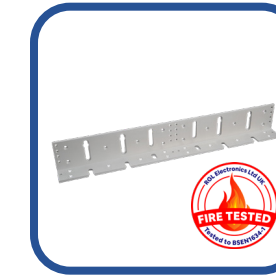
### 600ZLE

- Extension plate to extend ZL Bracket
- Fully Adjustable
- Extends up to 140mm



### BK1200-D-ZL

- Specially designed bracket slots that allow for a simple one person installation of double maglocks
- Available for all ML1200-D range
- Fully adjustable brackets
- Anodised aluminium finish
- Use on inward opening doors
- 30, 60, 90 & 120 minute timber door sets



### BK1200-D-L

- Specially designed bracket slots that allow for a simple one person installation of double maglocks
- Available for all ML1200-D range
- Fully adjustable brackets
- Anodised aluminium finish
- Use on outward opening doors
- 30, 60, 90 & 120 minute timber door sets



### ABP600

- Light and strong aluminium armature plate
- Multiple fixing holes for holding strength
- Supplied with armature securing bolt
- Removes the need to drill through the door
- 185x38x6 (mm)

**CAN ALSO BE USED WITH ML300**



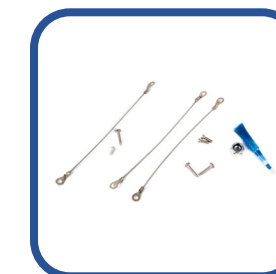
### MAGLOCK-SAFETY-KIT

- Safety kit for magnetic lock installations
- Magstrap
- Armstrap
- Loctite
- Captive nut



### ABP1200

- Light and strong aluminium armature plate
- Multiple fixing holes for holding strength
- Supplied with armature securing bolt
- Removes the need to drill through the door
- 191x63x9.5 (mm)



### MAGLOCK-SAFETY-KIT

- Safety kit for magnetic lock installations
- Magstrap
- Armstrap
- Loctite
- Captive nut

# fire tested range.

all rgl maglocks and accessories are tested in accordance with **BSEN 1634-1:2014** on **30, 60, 90 and 120 minute timber door sets**



**DHM600**

- Aluminium housing
- 12/24VDC @ 450/265mA
- 1 x 280kg (600lb) holding force
- Built in surge protection
- Monitored (door open or door closed detection)
- Suitable for 90 degree wooden or aluminium doors
- Delay timer 0/2.5/5/9 seconds
- Built in exit button
- Visible LED indication
- 300 x 92 x 58 (mm)



**DHM600-60**

- Aluminium housing
- 12/24VDC @ 920/460mA
- 2 x 280kg (600lb) holding force
- Built in surge protection
- Monitored (door open or door closed detection)
- Suitable for 90 degree wooden or aluminium doors
- Delay timer 0/2.5/5/9 seconds
- Built in exit button
- Visible LED indication
- 600 x 92 x 58 (mm)



**DHM600-200**

- Aluminium housing
- 12/24VDC @ 920/460mA
- 2 x 280kg (600lb) holding force
- Built in surge protection
- Monitored (door open or door closed detection)
- Suitable for 90 degree wooden or aluminium doors
- Delay timer 0/2.5/5/9 seconds
- Built in exit button
- Visible LED indication
- 1980 x 92 x 58 (mm)

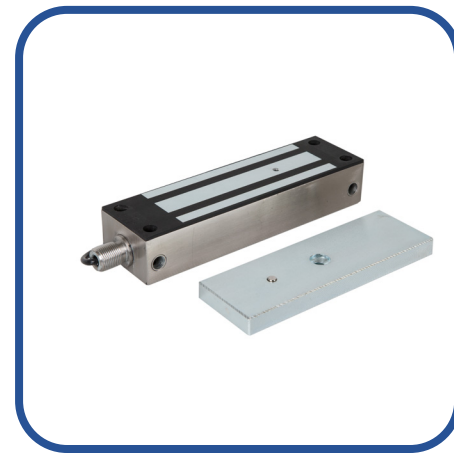
**AVAILABLE WITHOUT BUILT IN EXIT BUTTON**

**ADD (A) TO END OF PART CODE FOR THESE VERSIONS**



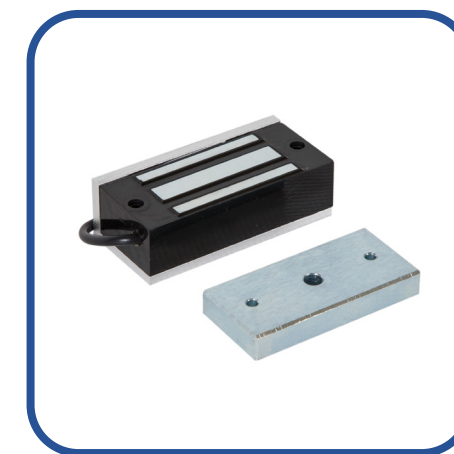
### EXML600-GATE

- Slimline/mini magnet
- Weatherproof
- 600lb (280kg) holding force
- Stainless steel housing
- 12/24VDC @500/250mA
- Built in surge protection
- 1 metre long cable
- 220x45x27 (mm)



### EXML1200-GATE

- Standard magnet
- Weatherproof
- 1200lb (540kg) holding force
- Stainless steel housing
- 12/24VDC @600/300mA
- Built in surge protection
- 1 metre long cable
- 220x60x40 (mm)



### ML100

- Cabinet magnet
- 100lb (60kg) holding force
- Aluminium housing
- 12VDC @ 150mA
- Built in surge protection
- Comes with L bracket
- 80x33x20 (mm)



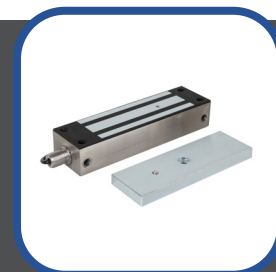
### ML300

- Micro magnet
- 300lb (180kg) holding force
- Aluminium housing
- 12VDC @ 300mA
- Built in surge protection
- 170x40x21 (mm)



### EXML600-GATE-M

- Monitored
- Includes monitoring contact (reed switch)
- See above for additional specification



### EXML1200-GATE-M

- Monitored
- Includes monitoring contact (reed switch)
- See above for additional specification

### ARM300

Replacement Armature



### ABP600

- Light and strong aluminium armature plate
- Can be used with ML600 and ML300 range
- Supplied with armature securing bolt
- Removes the need to drill through the door
- 185x38x6 (mm)



### BKEX600ZL

- Adjustable Z & L bracket
- Use with EXML600-GATE
- Use on inward opening doors and gates

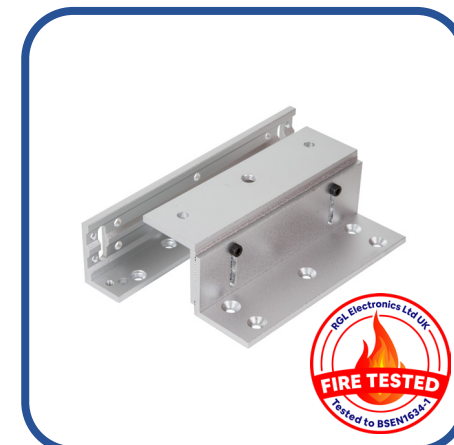


### BKEX1200ZL

- Adjustable Z & L bracket
- Use with EXML1200-GATE
- Use on inward opening doors and gates

### BKEX1200L

- Adjustable L bracket
- Use with EXML1200-GATE
- Use on outward opening doors and gates



### BK300ZL

- Adjustable Z & L bracket
- Use with ML300 maglocks
- Use on inward opening doors

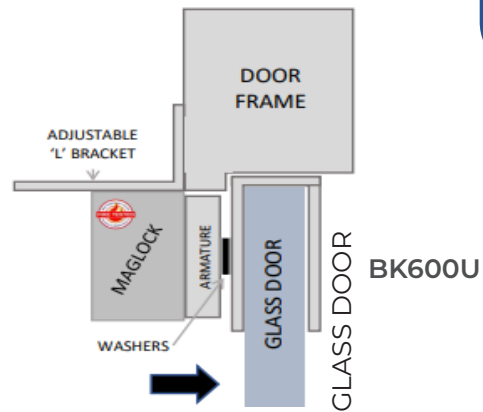


### AH300

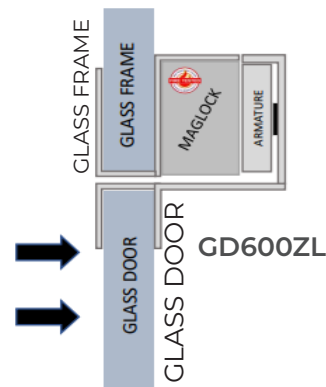
- Surface armature housing
- Multiple fixing holes for holding strength
- Supplied with fixing screws and armature securing bolt
- 30, 60, 90 & 120 minute timber door sets
- 145x43x16 (mm)

**BK600U**

- Glass door bracket
- Outward opening doors
- Avoids drilling glass
- U bracket only
- For use with ML600 range
- Comes complete with shims for various glass thickness
- For use on doors from 13-15mm

**GD600ZL-AB**

- Glass door Z&L bracket to work with ML600 range of maglocks
- For use on inward opening glass doors
- Suitable for glass doors combined with glass door frames
- Comes complete with shims for various glass thickness

**AS900**

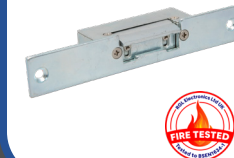
- Fail Safe (Power to Lock)
- Fail Secure (Power to Open)
- Selected by adjustment at rear of unit
- Comes with Short and Long Faceplate
- Holding force: 1500lb/680kg
- 12VDC/24VDC Selectable
- Current:
  - 12V 280mA
  - 24V 140mA
- 124 x 32 x 43 (mm) Short Plate
- 201 x 32 x 43 (mm) Long Plate

**AS900M**

- Monitored (NO/COM/NC Contacts)
- Fail Safe (Power to Lock)
- Fail Secure (Power to Open)
- Selected by adjustment at rear of unit
- Comes with Short and Long Faceplate
- Holding force: 1500lb/680kg
- 12VDC/24VDC Selectable
- Current:
  - 12V 280mA
  - 24V 140mA
- 124 x 32 x 43 (mm) Short Plate
- 201 x 32 x 43 (mm) Long Plate

**DS-01-02**

- Fire rated option comes supplied with 1mm intumescent kit
- Fire tested to BSEN1634-1-2014
- 30, 60, 90 & 120 minute timber door sets

**EL225**

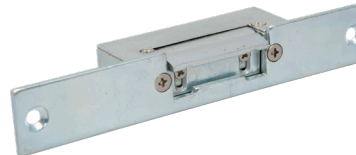
- Extension Lips 22.5mm
- Use with AS900 range

**DBGLS150**

- Glass frame to glass door drop bolt
- Fail-safe version
- Operating voltage - 12VDC
- Delay timer (0/3/6/9 seconds)
- For use on glass door and frames
- Holding force 1000kg
- For use on doors up to 15mm
- 148x42x38 (mm) (Bolt portion)
- 148x46x25 (mm) (Recess portion)

**GD2600**

- Pair of 'U' shaped saddles for use in conjunction with the MSL2600 and SH2600 surface housing
- Enables a secure clamped fixing to plate glass doors and headers, avoiding the need to drill or glue to the glass
- Polished chrome finish
- Includes shims for varying glass finishes
- 207x46x20 (mm)

**DS-01**

- Suitable for metal, wooden and glass doors
- 12V AC/DC (intermittent use only)
- Euro style release
- Apply power to open (fail secure)
- Mortice/rim face plates included
- Use with access and door entry systems
- 160x32x25 (mm) (Mortice)
- 106x32x50 (mm) (Rim)

**DS-002**

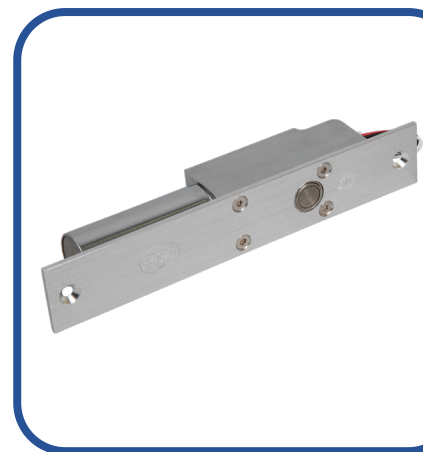
- Suitable for wooden doors
- 12VDC
- 400kg holding force
- Apply power to lock (fail safe)
- Use with access and door entry systems
- 150x35x50 (mm)

**MED-57K****Motorised Electric Deadbolt**

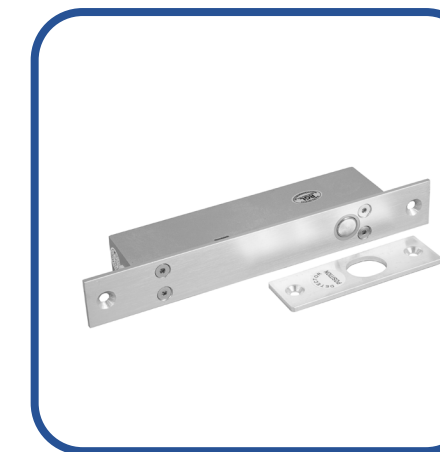
- 12-24VDC
- IP57
- Electric Deadlocking
- Holding force up to 1500kg
- Built in Position Sensor
- Includes Release Knob
- Maximum Door Thickness 80mm
- Includes 3 x Keys
- Non-Handed
- Suitable for Heavy Duty Doors & Cages

**MED-57****Motorised Electric Deadbolt**

- 12-24VDC
- IP57
- Electric Deadlocking
- Holding force up to 1500kg
- Built in Position Sensor
- Maximum Door Thickness 80mm
- Includes 3 x Keys
- Non-Handed
- Suitable for Heavy Duty Doors & Cages

**SB-200LS**

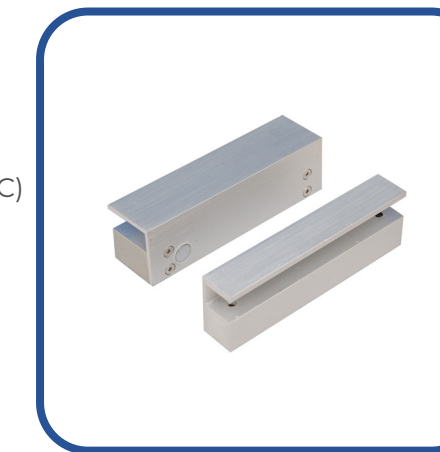
- Solenoid bolt
- Operating voltage - 12VDC
- Standby current - 250mA
- Operating current - 650mA
- Power to lock
- Fail-safe operation
- Delay timer (0/3/6/9 seconds)
- Monitored output for door status
- Holding force 1000kg
- 200x35x38 (mm)

**SB-235**

- Monitored solenoid bolt
- Operating voltage - 12VDC
- Standby current - 100mA
- Operating current - 150mA
- Initial surge - 1.4Amps
- Power to lock
- Fail-safe operation
- Delay timer (0/3/6 seconds)
- Locking by detector plate
- Monitored output for door status
- Suitable for wooden doors
- Concealed when flush fitted
- Holding force 1000kg
- 200x28x35 (mm)

**SSB-300**

- Surface solenoid bolt
- 12-24VDC
- Standby current - 210mA (12VDC)
- Operating current - 570mA (12VDC)
- Power to lock
- Fail-safe operation
- Holding force 1000kg
- Adjustable lock time - 0-3 secs
- Door position reed contact
- Lock Body = 114x39x27 (mm)
- Receiver = 114x20x27 (mm)

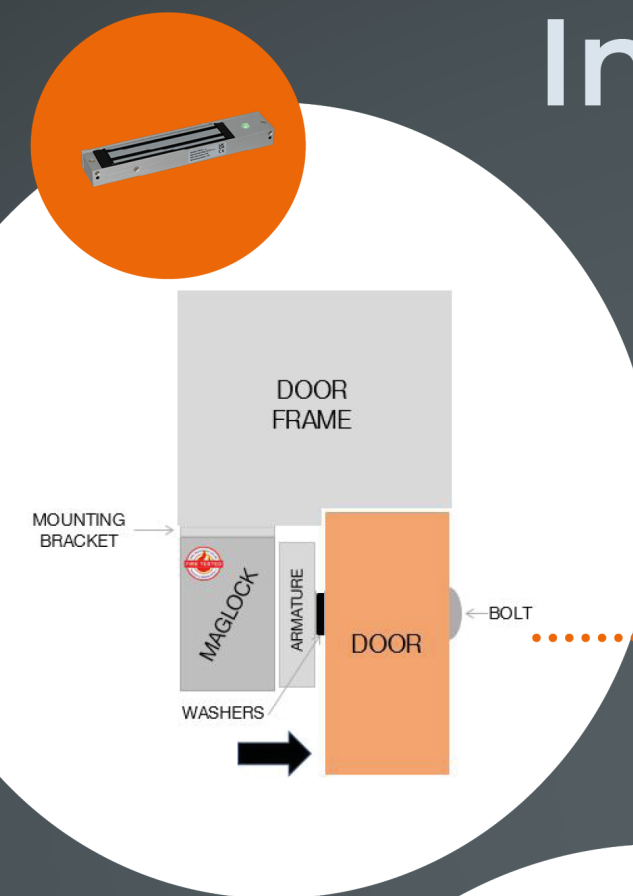
**DBGLS150**

- Glass frame to glass door drop bolt
- Fail-safe version
- Operating voltage - 12VDC
- Delay timer (0/3/6/9 seconds)
- For use on glass doors and frames
- Holding force 1000kg
- For use on doors up to 15mm
- 148x42x38 (mm) (Bolt portion)
- 148x46x25 (mm) (Recess portion)



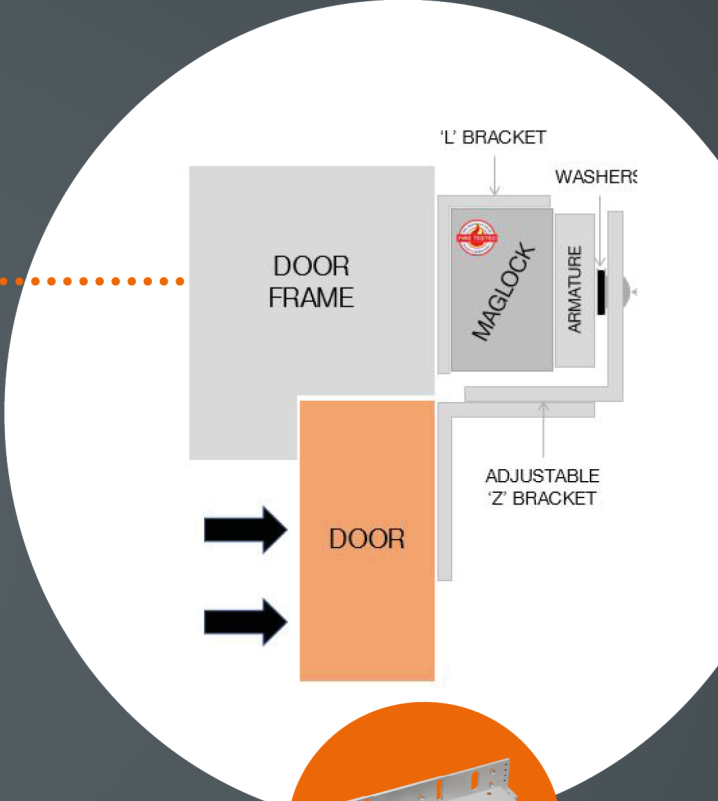
# Installation Guide

These are the most common installation methods for a slimline maglock.



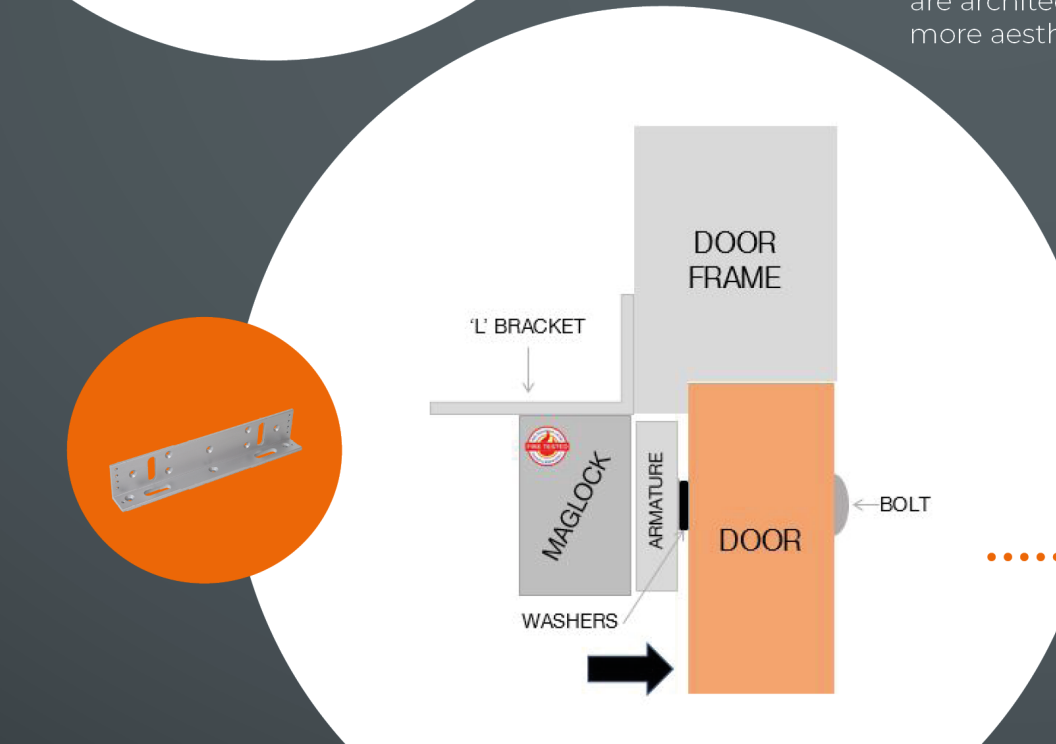
This bracket comes with the maglock, and is suitable for an outward opening door, where there is ample space on the underside of the transom to install the maglock.

01



The Z & L Bracket is required and can be installed on most inward opening door installations. There are architectural variations for a more aesthetic finish.

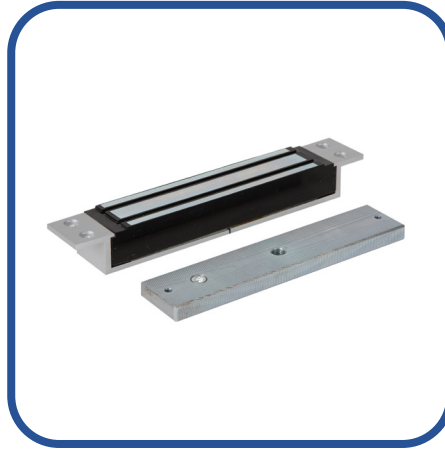
02



When the transom has insufficient room to install the maglock directly onto it, then a 'L' Bracket will be required for outward opening doors.

03

## MM600-MORT



- Slimline/Mini mortice magnet
- 600lb (280kg) holding force
- Aluminium bracket
- 12/24VDC @480/240mA
- Built in surge protection
- 23cm cable
- 230x38x29 (mm)

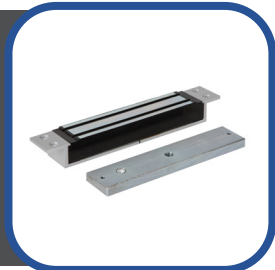
## MSL-2600



- Shear lock
- Door open delay timer
- Door position outputs
- Monitored
- 12V or 24V DC (auto adjusting)
- 220mA @ 12VDC/190mA @ 24VDC
- Maximum holding force of 1200kg or 2600kg
- 180x25x30 (mm) Magnet
- 181x24x30 (mm) Armature

## MM600-M-MORT

Monitored Mortice Maglock



## SH2600



- Used to surface mount the MSL-2600
- Satin anodised aluminium finish with black end caps
- Glass saddle kit available for fixing the glass door and glass header
- 231 x 43.5 x 46 (mm)

## GD2600



- Pair of 'U' shaped saddles for use with the MSL-2600 shearlock and SH2600 surface housing
- Enables a secure fixing to plate glass doors and headers, avoiding the need to drill or glue to the glass
- Polished chrome finish
- Includes shims for varying glass finishes
- 207x46x20 (mm)



## MAGNET FIXING KITS

- 600GB (Fixing kits for ML600 range)
- 1200GB (Fixing kits for ML1200 range)
- EX600GB (Fixing kits for EXML600-GATE range)
- EX1200GB (Fixing kits for EXML1200-GATE range)



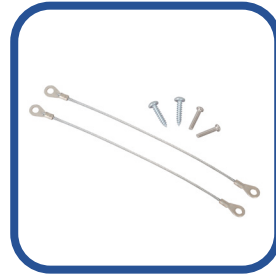
## BRACKET FIXING KITS

- 600BK (Fixing kits for BK600ZL)
- 1200BK (Fixing kits for BK1200ZL)



## BOLTS

- ARM-BOLT-KIT1 (1 x 50mm & 1 x 60mm)
- ARM-BOLT-KIT2 (1 x 80mm & 1 x 100mm)
- All Bolts are M8



## SAFETY STRAPS

- MAG-STRAP (safety straps for maglocks)
- ARM-STRAP (safety strap for armatures)



## ARMATURES

- ARM600 (Replacement armature for ML600)
- ARM1200 (Replacement armature for ML1200)
- EXARM600 (Replacement armature for EXML600-GATE)
- EXARM1200 (Replacement armature for EXML1200-GATE)



## AH300

- Surface Armature housing
- Multiple fixing holes for holding strength
- Supplied with fixing screws and armature securing bolt
- 30, 60, 90 & 120 minute timber door sets



## AH600

- Surface Armature housing
- Light and strong aluminium armature
- Multiple fixing holes for holding strength
- Supplied with fixing screws
- Supplied with armature securing bolt
- 30, 60, 90 & 120 minute timber door sets
- Removes the need to drill through door
- 192x45x13 (mm)



## AH1200

- Surface Armature housing
- Light and strong aluminium armature
- Multiple fixing holes for holding strength
- Supplied with fixing screws
- Supplied with armature securing bolt
- 30, 60, 90 & 120 minute timber door sets
- Removes the need to drill through door
- 196x72x19 (mm)



## DR-01/BK

- Door retaining magnet
- Suitable for type 3 doors
- Voltage: 24VDC
- Current draw: 70mA
- 2mm stainless steel faceplate
- Extra high impact ABS enclosure in black
- Manual release push button
- 90x90x40/50 (mm)



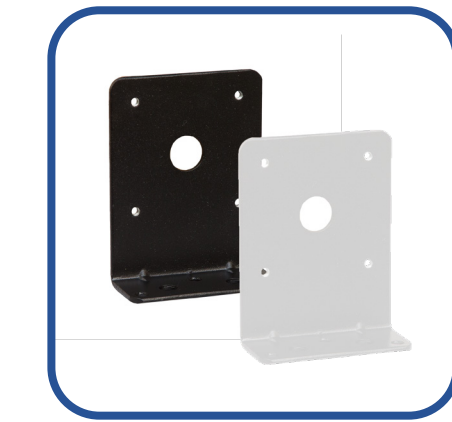
## DR-01/W

- Door retaining magnet
- Suitable for type 3 doors
- Voltage: 24VDC
- Current draw: 70mA
- 2mm stainless steel faceplate
- Extra high impact ABS enclosure in white
- Manual release push button
- 90x90x40/50 (mm)



## DR-01/SS

- Door retaining magnet
- Suitable for type 3 doors
- Voltage: 24VDC
- Current draw: 70mA
- 2mm stainless steel faceplate
- Stainless Steel enclosure
- Manual release push button
- 90x90x40/50 (mm)



## DR-01-BKT

- Stainless steel brackets
- Powder coated in black or white
- Allows for floor mounting
- 117x90x40 (mm)



## DR-ARM-1

- Enables product to be fitted where the door does not come near to the magnet
- Suitable for use with DR-01 hold open magnets
- 95cm chain - can be cut and adjusted to appropriate length
- Available in a black or white bracket
- Armature surrounded by rubber cover to protect door
- Chain is made of stainless steel

**ONLY at RGL**




**EXTRA SLOTS**



**1 Traditional Allen Key Fixings  
2 Additional Fixing Points**



**BK600L**

***SAFEST TO USE  
EASIEST TO INSTALL***

**EASIER  
FOR INSTALLERS**

The easy fit brackets give installers much more freedom to install. The brackets can be fitted to the frame, and then the magnets can just be slotted onto them. You can release the magnet and tighten the bolts without having to hold the maglock in place. You don't even require a second person for the really heavy magnets!

**SAFER  
FOR USERS**

As easy as these brackets are to install, an even bigger positive is that they are the safest brackets yet. There are twice as many fixing points as a standard L bracket, and 8 fixing points on our double brackets.

BK600L, BK600ZL, BK600-D-L, BK600-D-ZL  
BK1200L, BK1200ZL, BK1200-D-L, BK1200-D-ZL

**Also included in the FL/AB Range**

**04  
POWER  
SUPPLIES**

**S.** signal

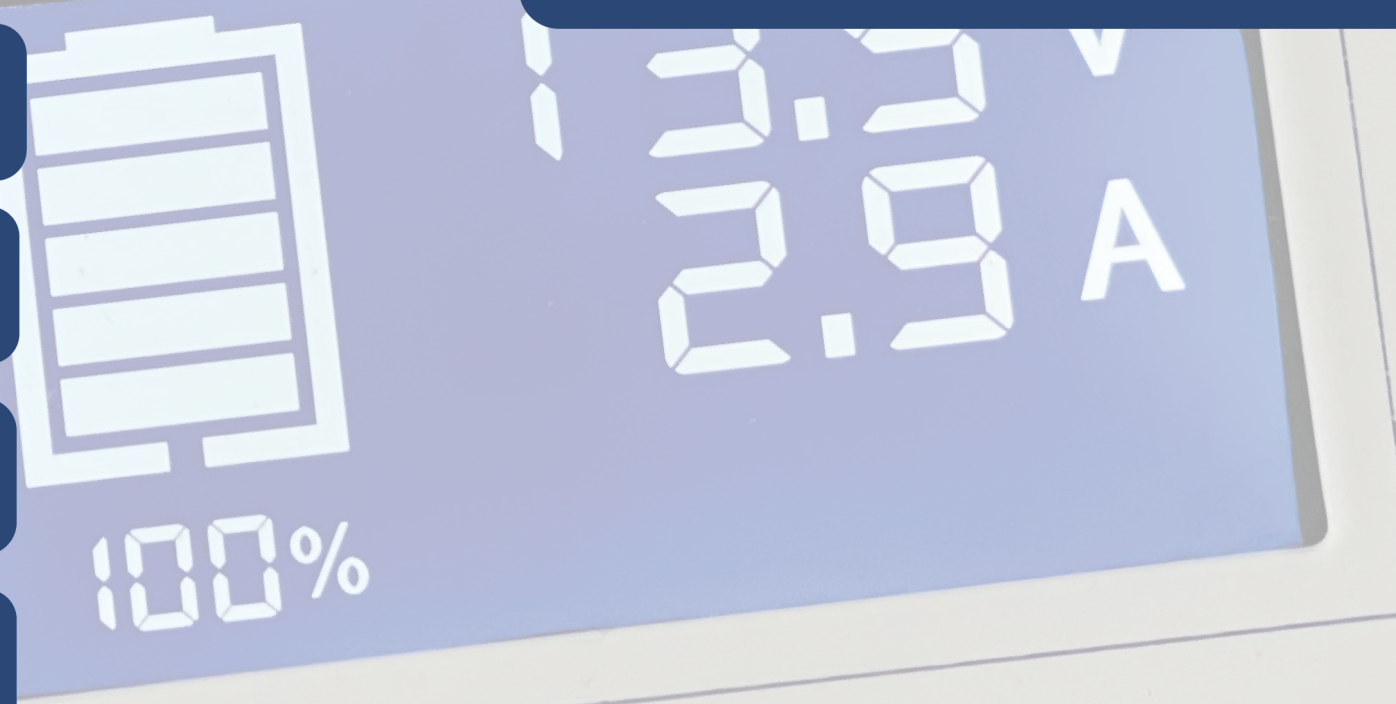
**M.** monitored

**A.** automatic

**R.** readable

**T.** text

# smart EN50131-6



**enerflex.**  
raising the standards



**1201SM-1 (1AMP)**  
**1202SM-1 (2AMP)**  
**1203SM-1 (3AMP)**  
**1205SM-1 (5AMP)**

- Full current to load
- 12-14VDC adjustable output
- Up to 92% Efficiency (GaN)
- Additional battery charging
- Deep discharge protection
- Current limiting
- Short circuit protection
- Compliant to EMC EN61000-6-1&3
- Can house a battery up to 12V 9Ah
- 225x196x75 (mm)

**1201SM**  
**1202SM**  
**1203SM**  
**1205SM**

- Full current to load
- 12-14VDC adjustable output
- Up to 92% Efficiency (GaN)
- Additional battery charging
- Deep discharge protection
- Current limiting
- Short circuit protection
- Mains transient protection
- Compliant to EMC EN61000-6-1 & 3

**1201SM-2 (1AMP)**  
**1202SM-2 (2AMP)**  
**1203SM-2 (3AMP)**  
**1205SM-2 (5AMP)**  
**12TENSMS-2 (10AMP)**

- Full current to load
- 12-14VDC adjustable output
- Up to 92% Efficiency (GaN)
- Additional battery charging
- Deep discharge protection
- Current limiting
- Short circuit protection
- Mains transient protection
- Compliant to EMC EN61000-6-1&3
- Can fit a battery up to 12V 17Ah
- 310x340x80 (mm)

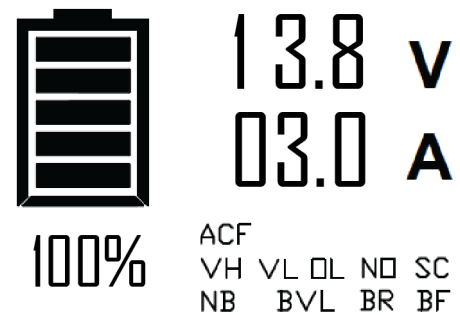
## EN50131-6 just got smarter.

The new SMART EN power supplies from RGL have been designed to meet all grade 2 & grade 3 requirements to EN50131-6:2017 and PD6662:2017 and beyond.

The smart LCD display allows instant diagnostics through RGL's SMART display (Signal, Monitored, Automatic, Readable, Text) for all grade 2 & grade 3 power supplies.

Not only does the new SMART switch mode range give fault output signalling EPS/APS/PSU, it provides the engineer with a time saving readable text informing the condition of the fault.

This new innovation puts LED signalling in the dark and allows valuable time and money to be saved on site through early fault detection



**enerflex.**  
raising the standards



**2401SM-2**  
**2402SM-2**  
**2403SM-2**  
**2405SM-2**

- Full current to load
- 24-28VDC adjustable output
- Up to 92% Efficiency (GaN)
- Additional battery charging
- Deep discharge protection
- Current limiting
- Short circuit protection
- Mains transient protection
- Compliant to EMC EN61000-6-1 & 3
- Can house 2 batteries up to 12V 7Ah
- 310x340x80 (mm)



**2401SM**  
**2402SM**  
**2403SM**  
**2405SM**

- Full current to load
- 24-28VDC adjustable output
- Up to 92% Efficiency (GaN)
- Additional battery charging
- Deep discharge protection
- Current limiting
- Short circuit protection
- Mains transient protection
- Compliant to EMC EN61000-6-1 & 3

**enerflex.**  
raising the standards



Our new range of Enerflex Power Supplies bring a whole host of new benefits

- ✓ Tested and Compliant to EMC 2014/30/EU
- ✓ Now up to 92% Energy Efficient
- ✓ Adjustable Voltages (12-14V) or (24-28V)
- ✓ Din Rail Design for Greater Versatility

**Gallium Nitride (GaN)**

- ✓ We manufacture our products to the highest quality, ensure you and your customers benefit from this.
- ✓ Our products are third party tested to make sure that they do not interfere with other equipment, and that they work as intended.



Our most Energy Efficient range yet

**CONTACT US**

01902 656667

info@rgl.co



**UK  
CA**



**1202SM-2MP (2AMP)**  
**1203SM-2MP (3AMP)**  
**1205SM-2MP (5AMP)**

- Full current to load
- Additional battery charging
- 13.8VDC regulated output
- Deep discharge protection
- Faults outputs: Mains fail, Battery fail, Output/fuse fail
- Monitors battery health
- 310x340x80 (mm)



**2401SM-2MP**  
**2402SM-2MP**  
**2403SM-2MP**  
**2405SM-2MP**

- Full current to load
- Additional battery charging
- 24-28VDC adjustable output
- Up to 92% Efficiency (GaN)
- Deep discharge protection
- Fault outputs: Mains fail, battery fail, output/fuse fail
- Monitors battery health
- 310x340x80 (mm)



**2402/4TRS**

- Ideal for hold open magnets
- Output released on fire alarm activation
- Not for use with backup battery
- Full current to load
- 24VDC regulated output
- LED indicators
- Short circuit protection
- 200x200x65 (mm)



**2404/8TRS**

- Ideal for hold open magnets
- Output released on fire alarm activation
- Not for use with back up battery
- Full current to load
- 24VDC regulated output
- LED indicators
- Short circuit protection
- 200x200x65 (mm)

**door retainers**



DR-01



DR-01-BKT

2402/4TRS



2404/8TRS



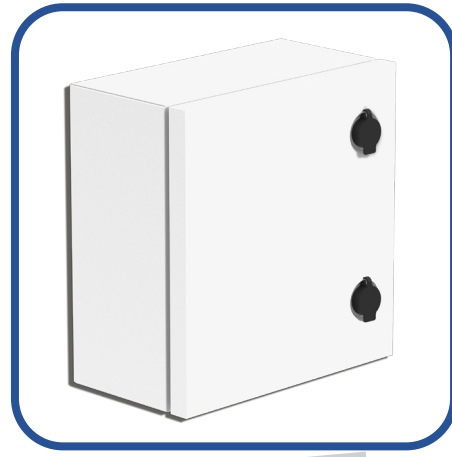
**SM-3**

- Extra large PSU box
- Suitable for all our switchmode power supply modules
- Clam shell box
- Can house 2 x 12V 17Ah batteries
- 400x425x87 (mm)



**SM-4**

- Extra deep PSU box
- Suitable for all our switchmode power supply modules
- Hinged box
- Can house 2 x 12V 24Ah batteries
- 353x380x195 (mm)



**IPBOX-5**

- IP66 rated enclosure
- Din Rail mount for RGL PSUs
- Mesh backed for easy installation of modules or PCBs
- 2 x sizes available
- IPBOX-5 (240Wx265Hx115D mm)
- IPBOX-2 (340Wx310Hx120D mm)



**EMLT**

- White powder coated box
- Lid secured with a single screw
- Clam shell design
- 330x255x85 (mm)



**LOCKABLE PSU**

- 1203SM-5CAM
- Lockable cam with 2 x keys
- Hinged box
- Can house a battery up to 12V 9Ah
- 265x195x72 (mm)

05  
CCTV



### CP12-4

- 4 replaceable fuses - 3 amps
- Full current to load
- 12VDC regulated output
- Fuse status indication
- Current limiting fuses
- LED indicators (mains on)
- 205x205x55 (mm)



### CP12-5

- 5 replaceable fuses - 5amps
- Full current to load
- 12VDC regulated output
- Fuse status indication
- Current limiting fuses
- LED indicators (mains on)
- 205x205x55 (mm)



### CP12-8

- 8 replaceable fuses - 8amps
- Full current to load
- 12VDC regulated output
- Fuse status indication
- Current limiting fuses
- LED indicators (mains on)
- 205x205x55 (mm)



### CP1210/SM Inline Power Supply

- 1amp power supply
- Input voltage 100-240V @ 50/60Hz
- Full current to load
- 12VDC regulated output
- LED indicators
- Fitted with 3 pin plug and 1m mains cable
- Fitted with 1m jack plug cable
- 69x42x30 (mm)



### CP1230/SM Inline Power Supply

- 3amp power supply
- Input voltage 100-240V @ 50/60Hz
- Full current to load
- 12VDC regulated output
- LED indicators
- Fitted with 3 pin plug and 1m mains cable
- Fitted with 1m jack plug cable
- 107x45x33 (mm)



### CP1250/SM Inline Power Supply

- 5amp power supply
- Input voltage 100-240V @ 50/60Hz
- Full current to load
- 12VDC regulated output
- LED indicators
- Fitted with 3 pin plug and 1m mains cable
- Fitted with 1m jack plug cable
- 106x68x32 (mm)



### CP12-10

- 10 replaceable fuses - 10amps
- Full current to load
- 12VDC regulated output
- Fuse status indication
- Current limiting fuses
- LED indicators (mains on)
- 240x200x55 (mm)



### CP12-16

- 16 replaceable fuses - 10amp
- Full current to load
- 12VDC regulated output
- Fuse status indication
- Current limiting fuses
- LED indicators (mains on)
- 240x200x55 (mm)



# RELAYS & MODULES



EASY TIMER RELAY

EASY INSTALL MODULE



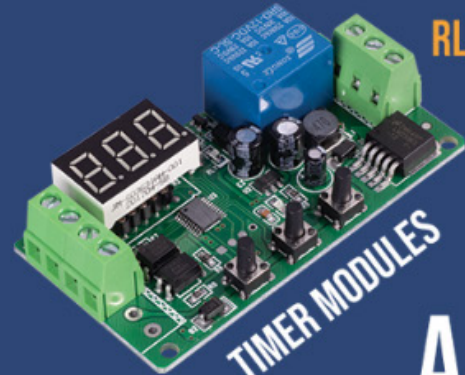
RL01  
RL02

MULTI PURPOSE RELAYS



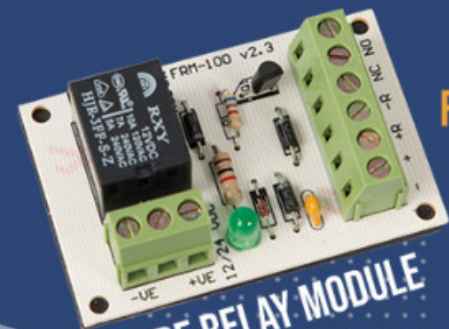
VRM2  
VRM24-12

VOLTAGE REDUCING MODULES



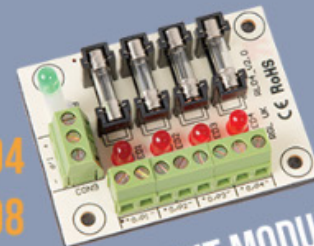
RL03-LED/12-24

TIMER MODULES



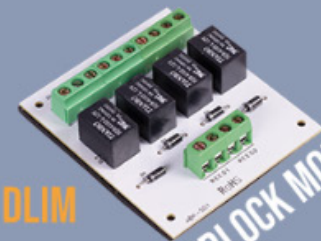
FRM-100

FIRE RELAY MODULE



RL04  
RL08

FUSE OUTPUT MODULES



DLIM

INTERLOCK MODULE

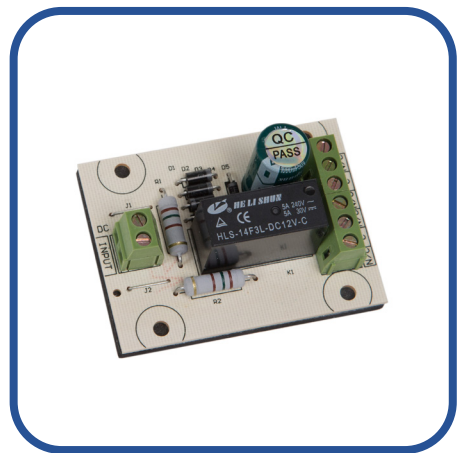
A RELAY  
FOR ALL  
SITUATIONS

06  
ACCESSORIES



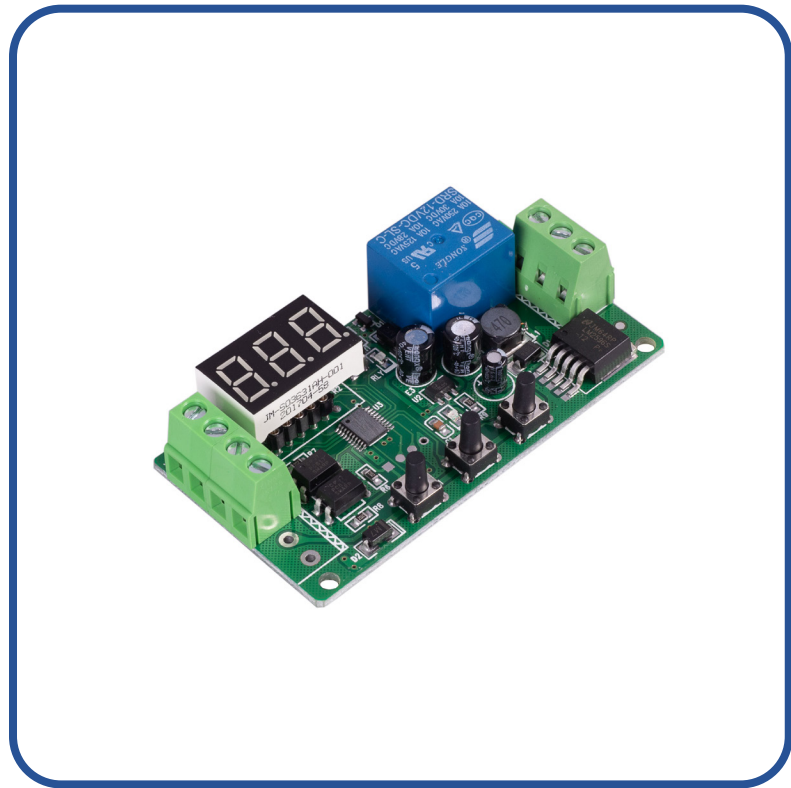
**RL01**

- Low current mini switching relay
- 9-20 VDC
- Coil 275 Ω
- Current 44 mA
- Contact rating 5A @ 250 VAC or 30 VDC
- 2 x COM-NO-NC
- 46x40 (mm)



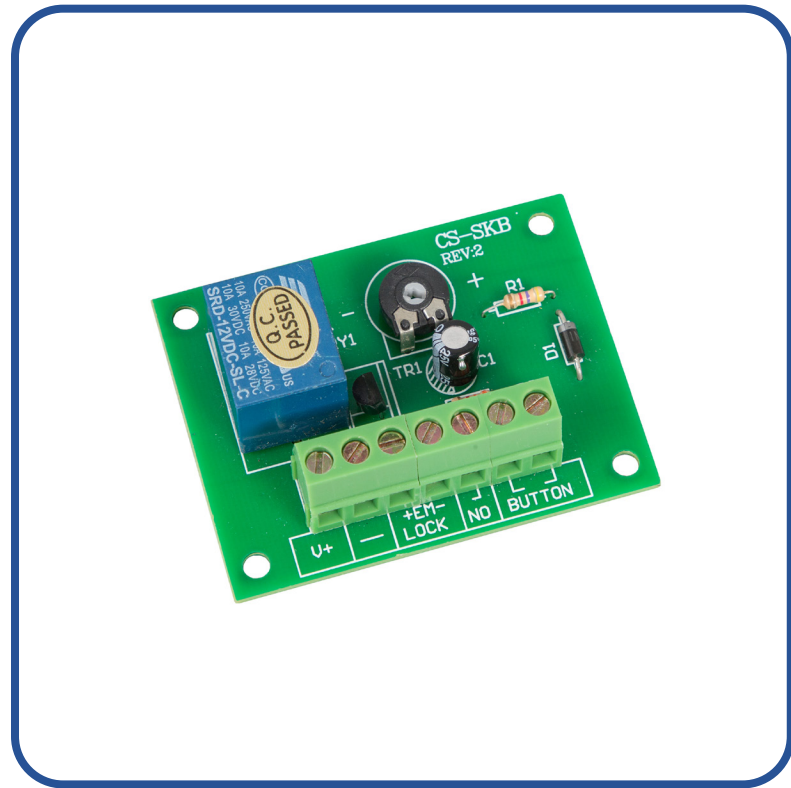
**RL02**

- Multi purpose relay
- 6-40 VDC or 6-30 VAC
- Coil 90 Ω
- Current 47 mA
- Contact rating 5A @250 VAC or 10A @ 30 VDC
- 2 x COM-NO-NC
- 67x50 (mm)



**RL03-LED/12-24**

- Timer relay unit
- 12V or 24V DC versions swichable
- Contact rating 10A @ 125VAC or 10A @ 30VDC
- NC/COM/NO
- LED timer indication
- 0.1 to 999 seconds or 1 to 999 minutes
- 76x40x17 (mm)



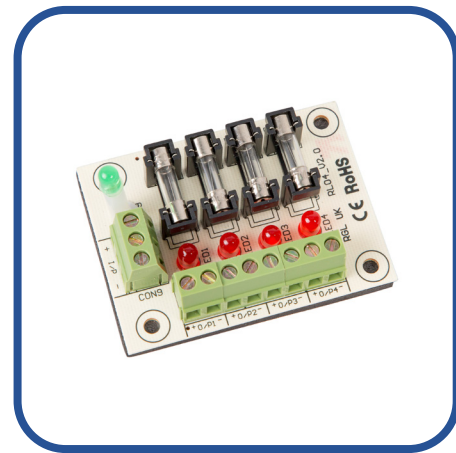
**EASY-RELAY**

- Timer relay unit
- 12V DC
- Contact rating 10A @ 125VAC or 10A @ 30VDC
- NC/COM/NO
- Easy wiring for access control
- Timer 0-15 seconds
- 60x45x20 (mm)

**TRAN/REC-01**

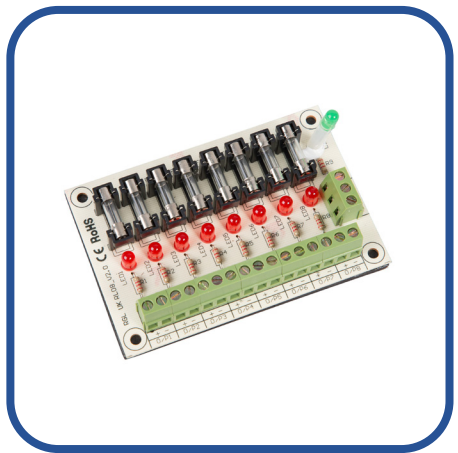


- Wireless operations (433Mhz)
- 12VDC
- TRAN01 is a momentary device
- Relay contacts can be toggled
- Lock / Unlock buttons on remote
- Multiple transmitters can be used on each receiver
- Supplied with a 27A type battery
- 40x70x21 (mm) (REC01)



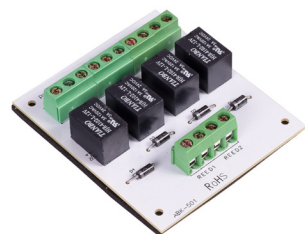
**RL04**

- 4 x individually fused 1amp outputs
- LED indication - Power input, Output active
- 67x50 (mm)



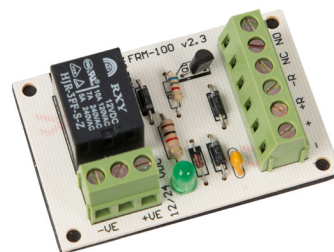
**RL08**

- 8 x individually fused 0.5amp outputs
- LED indication - Power input, Output active
- 67x100 (mm)



## DLIM

- Door lock interface module
- Control two doors for inter locking
- Two separate inputs/outputs
- Lock outputs are voltage free contacts 5A @ 24V
- Requires 12V supply
- 70x60 (mm)



## FRM-100

- Fire switching relay
- 12/24VDC
- Current 30mA
- Contact rating 5A @ 250VAC or 10A @ 24VDC
- 1 x COM/NO/NC
- LED indication
- 70x37 (mm)



## DL01

- Metal door loop
- Box fittings at each end
- Aluminium alloy electroplated casing at both ends
- Alloy tube 450mm long
- To take maximum 7mm cable diameter
- External/internal use
- Surface mounted
- 45x38x23 Casings (mm)



## DL02

- Metal door loop
- Box fittings at each end
- Aluminium alloy electroplated casing at both ends
- Alloy tube 600mm long
- To take maximum 7mm cable diameter
- External/internal use
- Surface mounted
- 45x38x23 Casings (mm)



## TRAN/REC-01

- Wireless operations (433Mhz)
- 12VDC
- TRAN01 is a momentary device
- Relay contacts can be toggled
- Lock / Unlock buttons on remote
- Multiple transmitters can be used on each receiver
- Supplied with a 27A type battery
- 40x70x21 (mm) (REC01)



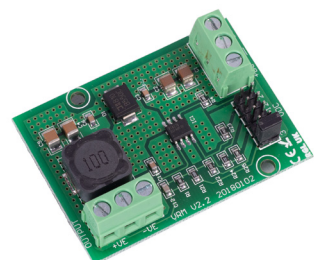
## MB-DL01

- Black Metal door loop
- Box fittings at each end
- Aluminium alloy electroplated casing at both ends
- Alloy tube 450mm long
- To take maximum 7mm cable diameter
- External/internal use
- Surface mounted
- 45x38x23 Casings (mm)



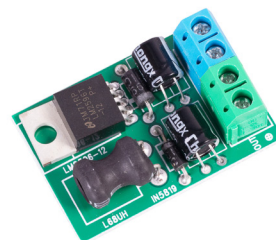
## MB-DL02

- Black Metal door loop
- Box fittings at each end
- Aluminium alloy electroplated casing at both ends
- Alloy tube 600mm long
- To take maximum 7mm cable diameter
- External/internal use
- Surface mounted
- 45x38x23 Casings (mm)



## VRM2

- Step down DC-DC converter
- Input 6-36VDC
- Output current: 1.5A maximum (1A continuous)
- Output voltage: 3, 6, 9, 12, 24 VDC
- 53.5x38.6x12.2 (mm)



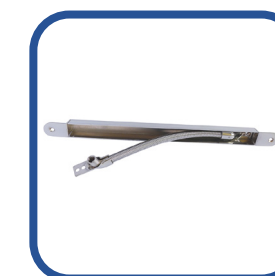
## VRM24-12

- Voltage reducing module
- Reduces voltage from 24VDC to 12VDC
- Inputs and output terminals
- Max current 1amp @ 12VDC
- 40x25 (mm)



## CDL-300

- Concealed Door Loop
- 300mm in length
- Suitable for Timber Doors & Frames
- Satin Chrome Finish



## CDL-500

- Concealed Door Loop
- 500mm in length
- Suitable for Timber Doors & Frames
- Satin Chrome Finish



**FIRE-DOCBOX-LN**

- Lockable document box (Fire)
- 2 key supplied (606)
- Key removable in both positions
- Red powder coated
- Hinged lid
- 300x235x50 (mm)



**DOCBOX**

- Lockable document box
- 2 keys supplied (606)
- Key removable in both positions
- White powder coated
- Hinged lid
- 300x235x50 (mm)



**TRAN01**

- Spare/additional transmitter
- For use with REC01
- 34x60x13 (mm)



**SPARE KEYS**

- KS1-KEY - 2803 spare key (pair)
- KS2-KEY - BLANK spare key (pair)
- KS3-KEY - 606 spare key (pair)
- 606-KEY - Docbox spare key (pair)
- KSA126-Key - A126 spare key (pair)



**FOBS AND CARDS**

- KP-FOB-BE - Proximity fob (blue)
- KP-FOB-GY - Proximity fob (grey)
- KP-CARD - Proximity card (standard)
- KP-HD-CARD - Proximity card (thick)



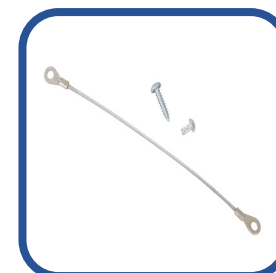
**BOLTS**

- ARM-BOLT-KIT1 - A selection of loner bolts that come in a pack of 2 bolts 50mm and 60mm long
- ARM-BOLT-KIT2 - A selection of loner bolts that come in a pack of 2 bolts of 80mm and 100mm long



**COVERS**

- Replacement cover for EDR products
- EDR-COVER-N (EDR-N Series)
- DU-COVER (Dual Unit Series)



**STRAPS**

- MAG-STRAP - Security strap for fixing the maglock to the frame of the door to secure the unit. 2 x 50mm long
- ARM-STRAP - Security strap for fixing the armature plate to the door to secure the unit. 1 x 50mm long



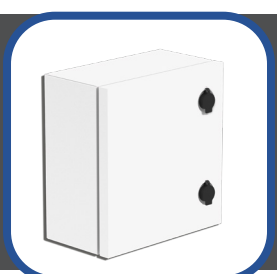
**FIRE-DOCBOX**

- Lockable box
- 2 key supplied (606)
- Key removable
- Hinged lid
- 300x235x50 (mm)



**606-KEY**

Docbox Replacement Key



**IPBOX-2**

IP66 (340Wx310Hx120D)

**IPBOX-5**

IP66 (240Wx265Hx115D)



**EMB**

- Empty metal box
- Box secured with single screw
- White powder coated
- Hinged lid
- 265x197x72 (mm)



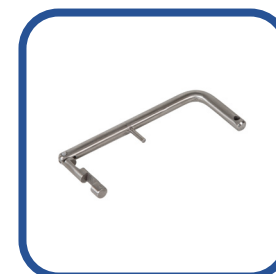
**KP-LOCKBOX**

- Lockable keypad box
- Internal plate is pre-drilled to suit a number of control panel keypads
- 2 keys supplied
- Key removable - all positions
- White powder coated
- Hinged lid
- 205x190x55 (mm)



**RESET KEY**

- Replacement/spare reset key
- For use with EDR and Dual Unit ranges
- Supplied in packs of 10



**FMS-KEY**

- Key for fireman switches



## MAGNET FIXING KITS

- 600GB (Fixing kits for ML600 range)
- 1200GB (Fixing kits for ML1200 range)
- EX600GB (Fixing kits for EXML600-GATE range)
- EX1200GB (Fixing kits for EXML1200-GATE range)



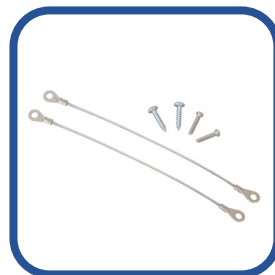
## BRACKET FIXING KITS

- 600BK (Fixing kits for BK600ZL)
- 1200BK (Fixing kits for BK1200ZL)



## MAGLOCK-SAFETY-KIT

- Safety kit for magnetic lock installations
- Magstrap
- Armstrap
- Loctite
- Captive nut



## SAFETY STRAPS

- MAG-STRAP (safety straps for maglocks)
- ARM-STRAP (safety strap for armatures)



## ARMATURE PLATES

- ARM600 (Replacement armature for ML600)
- ARM1200 (Replacement armature for ML1200)
- EXARM600 (Replacement armature for EXML600-GATE)
- EXARM1200 (Replacement armature for EXML1200-GATE)



## AH300

- Light and strong aluminium armature
- Multiple fixing holes for holding strength
- Supplied with fixing screws and armature securing bolt
- 30, 60, 90 & 120 minute timber door sets



## AH600

- Armature housing
- Light and strong aluminium armature
- Multiple fixing holes for holding strength
- Supplied with fixing screws
- Supplied with armature securing bolt
- Suitable for ML600 range
- Removes the need to drill through door
- 192x45x13 (mm)



## AH1200

- Armature housing
- Light and strong aluminium armature
- Multiple fixing holes for holding strength
- Supplied with fixing screws
- Supplied with armature securing bolt
- Suitable for ML1200 range
- Removes the need to drill through door
- 196x72x19 (mm)

# 07 ACCESS KITS



### ACKIT-1

- 1201SM-1 (12V 1amp PSU)
- ML600 (600lb/280kg magnetic lock)
- BK600ZL (ZL bracket)
- EBL/DR (Exit button)



### ACKIT-3

- 1201SM-1 (12V 1mp PSU)
- ML600 (600lb/280kg magnetic lock)
- BK600ZL (ZL bracket)
- EBGBWOC02/PTE (Exit button)
- EDR-1 (Emergency door release)
- KPX1000 (Access keypad)
- Rainshield
- 5 x grey fobs (KP-FOB-GY)



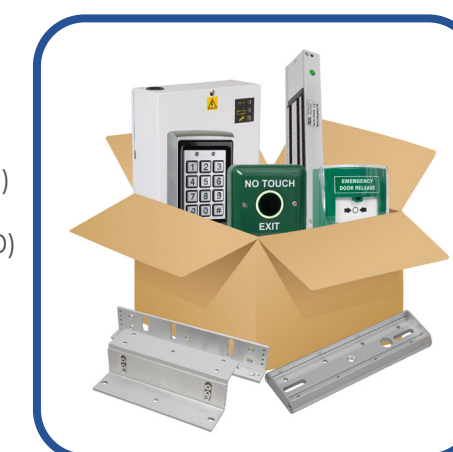
### ACKIT-4

- PX2000 (1amp PSU, RD26 reader)
- ML600 (600lb magnetic lock)
- BK600ZL (ZL bracket)
- EBGBWOC02/PTE (Exit button)
- EDR-1 (Emergency door release)
- 5 x grey fobs (KP-FOB-GY)



### ACKIT-FIRE

- Complete access control kit
- 12VDC 1AMP power supply
- 600lb fire tested maglock (ML600)
- ZL bracket (BK600ZL)
- Surface armature housing (AH600)
- Green dome button (EBGBWC02)
- Resettable break glass (EDR-2N)
- 5 x Fobs



### ACKIT-PXFIRE

- 35mm touch free sensor button
- Illumination - Red to Green
- Anti bacterial plastic
- Supplied with surface back box
- Can be surface or flush fitting
- Momentary operation
- Ideal for general/sensitive areas
- Screw footprint for flush fitting
- Fixing holes: 60mm distance
- Supplied with 2 slotted screws
- 85x85x32 (mm)



### WP-EDR-2

OPTIONAL EXTRA FOR KITS



### ACKIT-5

- PX2000 (1amp PSU, RD26 reader)
- DS-01 (Electric release)
- EBGBWOC02/PTE (Exit button)
- EDR-1 (Emergency door release)
- 5 x grey fobs (KP-FOB-GY)



### ACKIT-6

- Complete touch free access kit
- Power supply with integrated keypad (PX2000)
- No Touch Dual Unit (DU-NT/TF)
- Remote Wieigand Reader (RD26-C)
- 600lb fire tested maglock (ML600)
- ZL bracket (BK600ZL)
- 5 x Fobs (KP-FOB-GY)



### ACKIT-GATE600

- Complete external gate access kit
- 12VDC 2AMP power supply
- 600lb External Maglock (EXML600-GATE)
- External ZL bracket (BKEX600ZL)
- Keypad with prox (KPX50)
- Weatherproof green dome button (WP-EBGBWC02/PTE)
- 5 x KP-CARD



### ACKIT-GATE1200

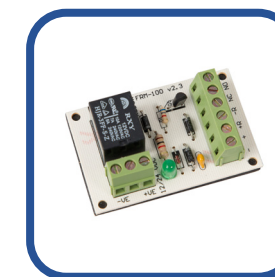
- Complete external gate kit
- 12VDC 2AMP power supply
- 1200lb External Maglock (EXML1200-GATE)
- External ZL bracket
- Keypad with prox (KPX50)
- Weatherproof green button (WP-EBGBWC02/PTE)
- 5 x KP-CARD

# 08 FIRE PRODUCTS



## FIRE-DOCBOX-LN

- Lockable document box
- 2 keys supplied (606)
- Key removable in both positions
- Red powder coated
- Hinged lid
- 300x235x50 (mm)



## FRM-100

- Fire switching relay
- 12/24VDC
- Current 30mA
- Contact rating 5A @ 250VAC or 10A @ 240VDC
- 1 x COM/NO/NC
- LED indication



## 24V PSU (LARGE BOX)

- Full current to load
- 27.6VDC regulated output
- Compliant to EMC EN61000-6-1 & 3
- Can house 2 batteries up to 12V 9Ah
- 310x340x80 (mm)
- Available in 1,2,3 and 5AMP



## 2402/4TRS

- Ideal for hold open magnets
- Output released on fire alarm activation
- Not for use with back up battery
- Full current to load
- 24VDC regulated output
- LED indicators
- 2amp with 4 outputs (2402/4TRS)
- 4amp with 8 outputs (2404/8TRS)
- 200x200x65 (mm)



## FMS (SURF & FLUSH)

- NO/COM/NC
- Changeover contacts
- Tamper proof fixings
- Stainless steel
- Drop key units (Key not included)
- 127x157x76 (mm) (Surface)
- 125x155x76 (mm) (Flush)



## FIREIS01

- Latching on/off operation
- Legend (ON/OFF)
- Key removal in both positions
- Keyed alike
- Supplied with 2 x keys (KEY-FIS)
- Nomal Voltage Rating: 230VAC 50Hz
- Contact Rating: Double Pole - 250VAC
- Fuse Rating: 4A Fast
- 90x90x55/45 (mm)



## KS-CP-S

- Single Pole - Normally Open/Normally Closed
- Latching on/off operation
- Keyed alike
- Supplied with 2 x keys (A126)
- Etched legend (0-1)
- 90x90x55/45(mm)



## KS-CP-D

- Double Pole / Double Throw (NO/NC)
- Latching on/off operation
- Keyed alike
- Supplied with 2 x keys (A126)
- Etched legend (0-1)
- 90x90x55/45(mm)

# 09 FINISHES

# RALock.

## FIRE RATED AS STANDARD. FINISHED TO PERFECTION.

Innovation is the key component to all RGL products. In both function and form, our new RALock. range of Maglocks and accessories bring contemporary design to the Access Control Market.



Our Fire Rated Maglocks and Fire Rated Bracketry are accompanied by an extensive range of Key switches and Exit buttons.

This comprehensive range of premium locking ancillaries are now available under the RALock. brand.

A brand which stands for exceptional quality, high-specification and reliability.

All available in a range of elegant finishes, bringing a modern appeal to Access Control Ancillaries.



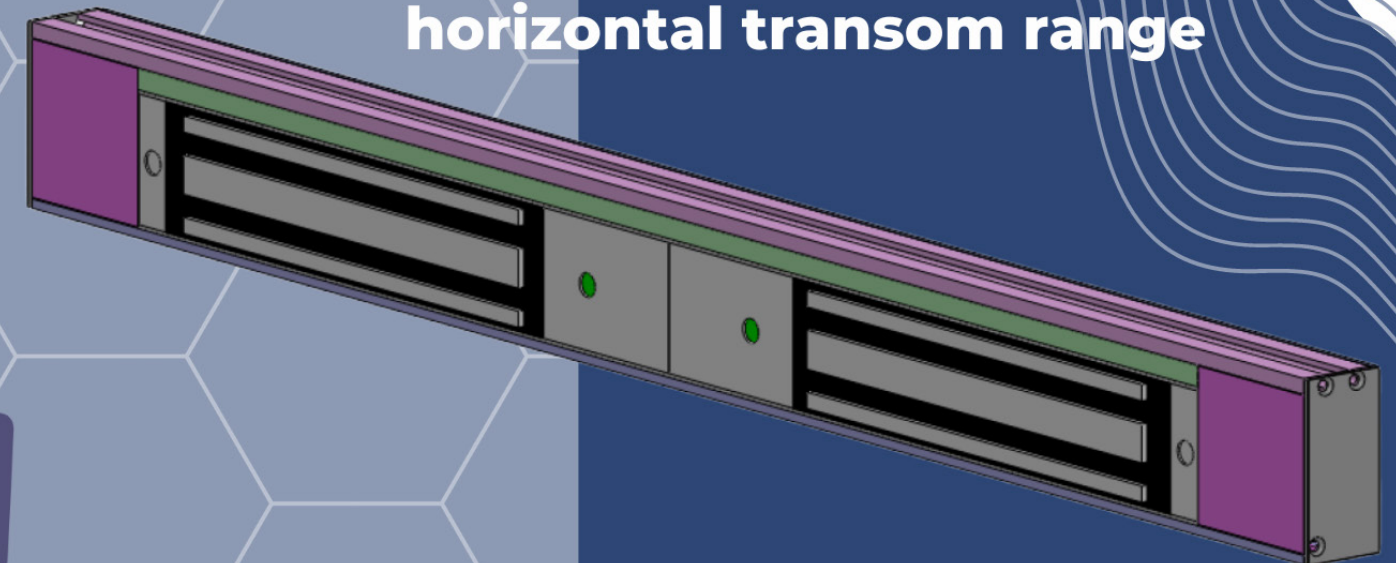
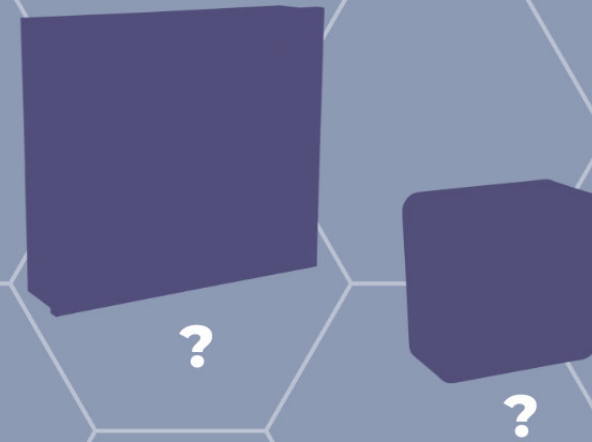
# LET RGL FINISH YOUR PROJECTS.



You can select from 7 different finishes or contact us to discuss the RAL options that are available to you:

- MBK-Matt Black
- SB-Satin Brass
- COP-S Satin Copper
- BRZ-L Light Bronze
- BRZ-M Mid Bronze
- BRZ-D Dark Bronze
- BRZ-MATT Matt Bronze

# COMING SOON



horizontal transom range



keypad range

emergency door release



## INNOVATION

You will already see from this catalogue that we have added a huge amount of new product to the RGL range recently - however we are nowhere near finished, and have some exciting new products coming out later this year (2024).

### Follow us:

For all our latest releases:-



## **RGL Electronics Ltd**

Pelham Works  
Pelham Street  
Wolverhampton  
West Midlands  
WV3 0BJ, UK

## **Contacts:**

[www.rgl.co](http://www.rgl.co)  
[info@rgl.co](mailto:info@rgl.co) or [sales@rgl.co](mailto:sales@rgl.co)  
+44 (0)1902 656667