



BLUE DOME PRESS FOR ASSISTANCE



EBB02/PFA

EXIT BUTTONS

Market leading exit buttons, that are both hard wearing and cost effective. Suitable for use in applications up to 30V.

SPECIFICATION

EBB02/PFA

- Contacts: Double pole N/O - N/C
- Output: 4 AMP contact @ 30V AC/DC
- Legend - Press for Assistance
- Security screws (allen key type)
- Internal use only

FEATURES

EBB02/PFA

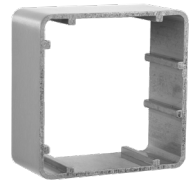
- All plastic large blue button
- Momentary operation
- Flush fitting as standard
- Easy clean surface. Ideal for general/sensitive areas
- Screw footprint for flush fitting onto standard back box

Optional Back Boxes

- EXTR03 - 38mm extrusion
- EXTR03-50 - 50mm extrusion
- PBBSHR/BK - 40mm black plastic back box
- SSBB02 - stainless steel back box

OTHER PRODUCTS

EXTR03



EBNT/TF-I



DIMENSIONS

EBB02/PFA

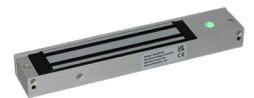
- 85x85 (mm)
- 220g (Boxed)
- 178g (Unboxed)

CONTENTS

EBB02/PFA

- Blue Dome Exit Button
- Stainless Steel Plate
- Flush Fitting Back Box
- 2 Security Screws
- Allen Key

ML600



DU-GB/PTE



Manufactured by a BSIA Member