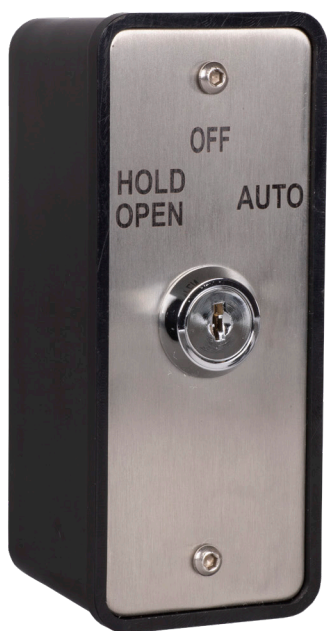




JAMB KEY SWITCH

KEY SWITCHES

An expanded range of key switches that complement our market leading range of access control solutions.



JMB/KS-3



JMB/KS-4

SPECIFICATION	FEATURES	OTHER PRODUCTS
---------------	----------	----------------

JMB/KS-3 & JMB/KS-4

- Key switch
- Latching operation
- High impact plastic back box
- Security screws (allen key type)
- Voltage free contacts
- 12-24VDC
- IP54 Rated
- Supplied with 2 x keys (606)

JMB/KS-3

- 3 Position key switch
- Etched legend (HOLD OPEN - OFF - AUTO)

JMB/KS-4

- 4 Position key switch
- Etched legend (OFF - 2 WAY - 1 WAY - HOLD OPEN)

JMB/KS-3 & JMB/KS-4

- Functional design
- Easy to operate
- Use for secure override
- Easy clean surface (ideal for hospitals/public areas)
- Screw footprint for surface fitting onto standard back box
- Footprint for mounting onto flush back box

ALTERNATIVES

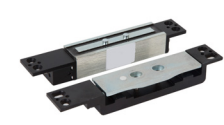
- KS-1 (Latching Key Switch)
- KS-2 (Momentary Operation)
- KS-EURO (Euro Key Switch)
- WP-KS-1 (Weatherproof Key Switch)
- EXT/AP/KS-1 or 3 (Architrave Extrusions KS)



DR-01/W



RL02



MSL2600



FMS-SURF

DIMENSIONS	CONTENTS
------------	----------

JMB/KS-3 & JMB/KS-4

- 120x50x47 (mm)
- 250g (Boxed)
- 210g (Unboxed)

JMB/KS-3 & JMB/KS-4

- Key Switch
- Stainless Steel Plate (2mm)
- 2 x Keys (606)
- 2 Security Screws
- Allen Key
- Jamb Surface Box



Manufactured by a BSIA Member