



# STAINLESS STEEL BUTTON

# EXIT BUTTONS

Market leading stainless steel buttons, that are both hard wearing and cost effective. Suitable for use in applications up to 30V.



**EBSS-TRADES**

## SPECIFICATION

### EBSS-TRADES

- Surface or flush fitting
- Stainless steel plate
- Stainless steel button
- Vandal resistant
- Double pole NO/NC contact
- Rating: 4amp contact @30V AC/DC
- Security screws (allen key type)
- Wear resistant legend
- IP54 rated switch
- 85x85x28 (mm)

## FEATURES

### EBSS-TRADES

- Stainless steel button
- Momentary operation / contact
- High impact plastic back box
- Can be surface or flush fitting
- Easy clean surface
- Ideal for general / sensitive areas

## OTHER PRODUCTS

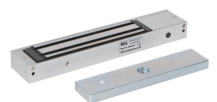
EBNT/TF-1



EXTR02



ML600



## DIMENSIONS

- EBSS-TRADES
- 85x85x28 (mm)

## CONTENTS

- EBSS-TRADES
- Stainless Steel Exit Button
  - Stainless Steel Plate (2mm)
  - 2 Security Screws
  - Allen Key

DU-GB/PTE



Manufactured by a BSIA Member