



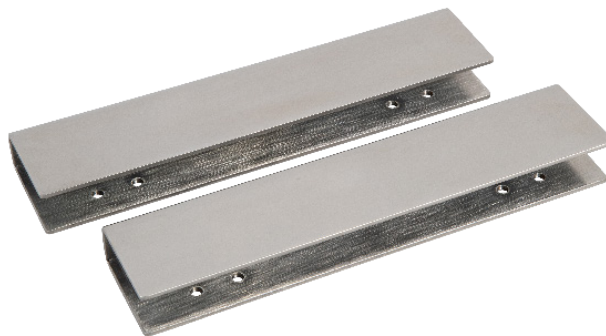
SHEARLOCK BRACKET RANGE

MAGNETIC LOCK

Range of brackets suitable providing solutions for a variety of glass door requirements. From a market leader in access control.



SH2600



GD2600

SPECIFICATION	FEATURES	OTHER PRODUCTS
---------------	----------	----------------

SH2600
 • This surface housing is ideal when mortice installation is not possible. Can also be used in conjunction with the GD2600 saddle kit for use on glass doors and glass headers

GD2600
 • This pair of U shaped saddles is for use in conjunction with the MSL2600 shearlock and surface housing (SH2600). It enables a secure clamped fixing to plate glass doors and headers, avoiding the need to drill or glue to the glass

- SH2600**
- Used to surface mount the MSL2600 shearlock
 - Satin anodised aluminium finish with black end caps
- GD2600**
- Suitable for glass thickness: 10-14mm
 - Materials: Steel
 - Requires 7mm minimum clearance between the door and the header



DIMENSIONS	CONTENTS
------------	----------

- SH2600**
 • 231x43.5x46 (mm)
GD2600
 • 207x46x20 (mm)

- SH2600**
 • 2 x Surface Housings
- GD2600**
 • 2 x Glass Door Brackets
 • Includes shims for glass thickness

