



RED DOME REQUEST TO EXIT

EXIT BUTTONS

Market leading exit buttons, that are both hard wearing and cost effective. Suitable for use in applications up to 30V.



EBRBWC02



Alternative Plate / Options Available

SPECIFICATION	FEATURES	OTHER PRODUCTS
---------------	----------	----------------

EBRBWC02

- Contacts: Double pole N/O - N/C
- Output: 4 AMP contact @ 30V AC/DC
- Blank legend
- Security screws (allen key type)
- Internal use only

EBRBWC02

- All plastic large red button
- Momentary operation
- Flush fitting as standard
- Easy clean surface. Ideal for general/sensitive areas
- Screw footprint for flush fitting onto standard back box



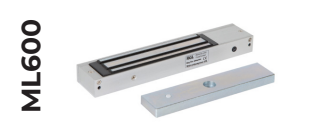
DIMENSIONS	CONTENTS
------------	----------

EBRBWC02

- 85x85 (mm)
- 220g (Boxed)
- 178g (Unboxed)

EBRBWC02

- Red Dome Exit Button
- Stainless Steel Plate
- 2 Security Screws
- Allen Key



Manufactured by a BSIA Member