

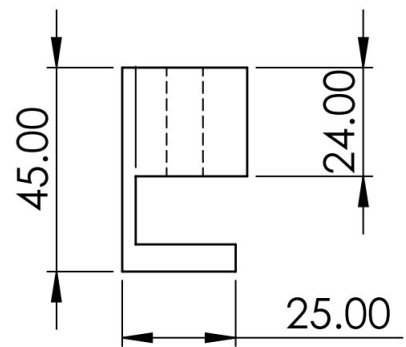
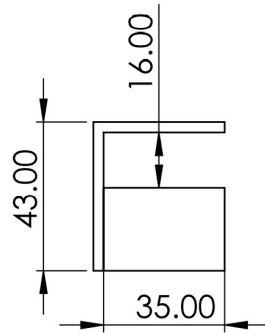


SOLENOID BOLT GLASS DOOR

MAGNETIC LOCK



DBGLS150



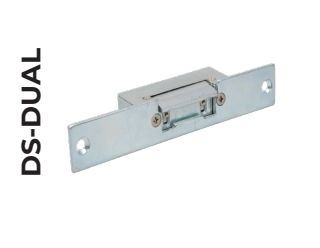
SPECIFICATION	FEATURES	OTHER PRODUCTS
---------------	----------	----------------

DBGLS150

- Operating voltage: 12VDC
- Standby current: 120mA
- Operating current: 900mA
- Suitable for double action swinging doors
- Holding force 1000kg
- For use on frameless glass doors up to 15mm thickness

DBGLS150

- Robust aluminium
- Fail-safe operation
- Long life drop bolt
- Auto locking after 3, 6 or 9 seconds
- Greater than 500,000 operation
- Auto relocking timer setting



DIMENSIONS	CONTENTS	OTHER PRODUCTS
------------	----------	----------------

DBGLS150

- Dropbolt: 148x42x39 (mm)
- Strike Plate: 148x42x25 (mm)

DBGLS150

- 2 Glass door units
- Door shims

