



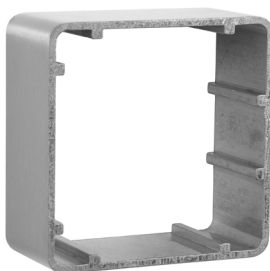
SURFACE BOXES

EXIT BUTTONS



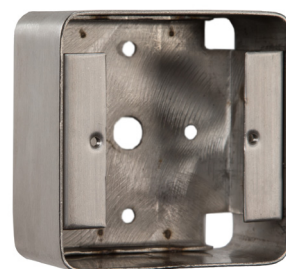
EXTR02

Aluminium extrusion
85Hx85Wx38D (mm)
Includes adj single gang box (35mm)



EXTR03

Aluminium extrusion
85Hx85Wx38D (mm)



SSBB02

Stainless steel back box
85Hx85Wx42D (mm)



PBB05/BK

40mm back box
Available in black or green



PBBSHR/BK

Shrouded plastic back box
40mm deep (Shroud is 50mm deep)



PBBJMB/BK

Jamb style back box - black
120Hx50Wx47D (mm)



SSBB03

Stainless steel back box
For use with EBLPP02
118Hx118Wx36D (mm)



PBB03/BK

Plastic back box
For use with EBLPP02
128Hx128Wx36D (mm)

OTHER PRODUCTS

PBBSHR/GN



PBB04/GN



PBB02/BK



Manufactured by a BSIA Member