



BRACKETS FOR SLIMLINE MAGNET (600LB)

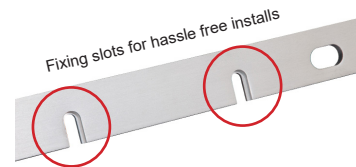
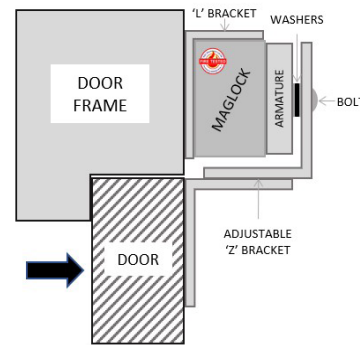
MAGNETIC LOCK

Fire tested range of maglocks and brackets from a market leader in access control.

FIRE TESTED to
BSEN1634-1-2014 & BS476:Part22:1987
(30, 60, 90 & 120 min timber door-sets)



BK600ZL



SPECIFICATION

BK600ZL
 • Adjustable Z&L brackets

• For use with the ML600 range of products
 • Can be fitted with BK600U for glass doors

Product now has added slots to improve and simplify the installation process, whilst enhancing the safety features of the product.

• Has 4 points of secure fixing
 • Magnet can now be slid into bracket to free up both hands to secure lock and bracket

Z bracket can extend by an additional 20mm to allow for door variations.

FEATURES

BK600ZL
 • ZL bracket

Alternative Brackets/Housings:

- BK600-F-L/AB (Architectural F/ZL)
- AB600ZL-DC (Architectural ZL)
- GD600ZL (Glass Door ZL)
- AB600CL (Architectural L)
- ADJ600-L (Highly adjustable L)
- AH600 (Required for Fire Doors)
- BK600U (Glass door bracket)

INWARD
 OUTWARD

OTHER PRODUCTS

IEPS/PTE

EXTR02

ML600

DU-CB/PTE

DIMENSIONS

BK600ZL

- Z bracket: 180L mm
- L bracket: 250L mm
- 644g (Boxed)
- 556g (Unboxed)

CONTENTS

BK600ZL

- 2 x Brackets to make up Z
- 1 x L Adjustable bracket
- 1 x Fixing kit

