

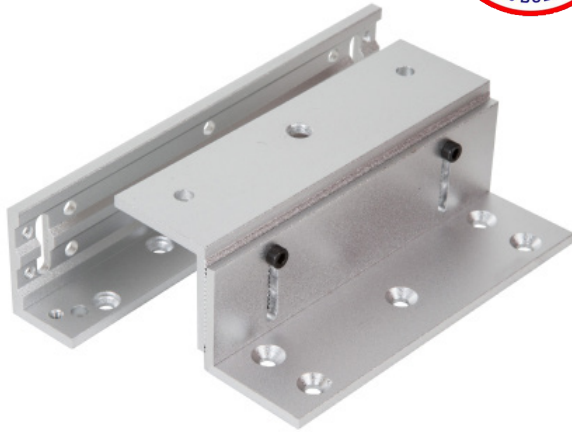


# BRACKETS FOR SLIMLINE MAGNET (300LB)

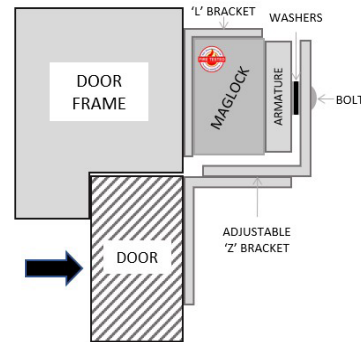
**MAGNETIC LOCK**

Fire tested range of maglocks and brackets from a market leader in access control.

**FIRE TESTED** to  
BSEN1634-1-2014 & BS476:Part22:1987  
(30, 60, 90 & 120 min timber door-sets)



**BK300ZL**



SPECIFICATION	FEATURES	OTHER PRODUCTS
---------------	----------	----------------

BK300ZL  
 • Adjustable Z&L brackets  
 • For use with ML300 range

BK300ZL  
 • ZL bracket

**EBCBWC02/DR**

**EXTR02**

**ML600**

**DU-GB/PTE**

**DIMENSIONS**

BK300ZL  
 • Z = 130 mm  
 • L = 170 mm  
 • 318kg (Boxed)  
 • 230kg (Unboxed)

**CONTENTS**

BK300ZL  
 • 2 x Brackets to make up Z  
 • 1 x L Adjustable bracket  
 • 1 x Fixing kit

